

Textile Book

Montbel
made in Italy

È una questione di colore.
È una questione
di sartorialità.

It's a matter of color.
It's a matter of
tailoring.

Manuela Montina

Montbel
made in Italy

I nostri prodotti, sono espressione di un arte del sapere in grado di trasformare la materia in sculture vellutate.

Rich in the art of knowing things, our products become an authentic experience, transforming coarse objects into velvety sculptures.



Attitudine sartoriale.

A tailor's approach.

Forme e superfici si vestono di colori e sensazioni tattili differenti. La collezione tessile Montbel è il risultato di una selezione di materiali di qualità, e di pregio, sempre al passo con le tendenze. Tutti i nostri tessuti, pelli ed ecopelli rispettano le più severe normative tecniche in ambito Contract.

Forms and surfaces don multifarious colours and, likewise, arouse several tactile sensations. Montbel's textile collection is the outcome of its selecting materials that are qualitative, precious, and always in step with trends. All our fabrics, leather and eco-leather conform to the severest technical norms in the Contract context.



Index

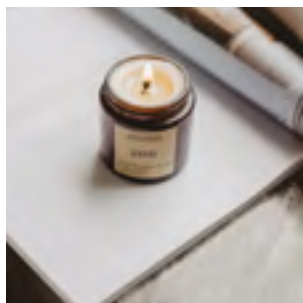
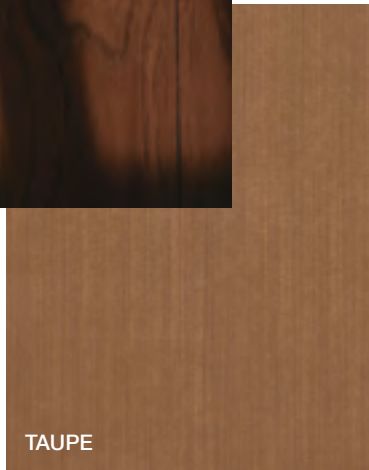
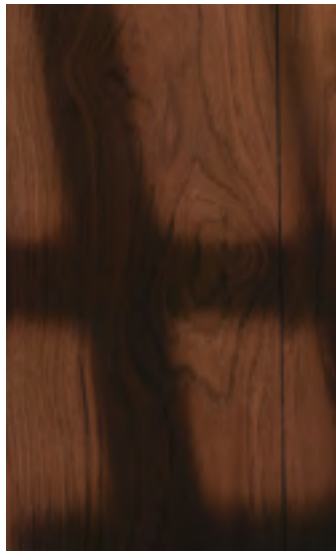
010	seta . cat.A . eco-leather
016	perla . cat.B . eco-leather
022	advan . cat.B . eco-leather
028	uni . cat.B
034	danzi . cat.B
040	vera . cat. B
046	extrema . cat.C . eco-leather
052	super . cat.C
060	las vegas . cat. C
064	bolle . cat.D
068	tobia . cat. D
072	polo . leather

I colori chiari non devono essere messi a contatto con tessuti e capi di abbigliamento trattati con coloranti non fissati (ad esempio jeans o derivati) o con scarse solidità di tintura, onde evitare macchie e aloni di coloranti di cui non possiamo garantire la pulitura. Vi informiamo di non poterci ritenere responsabili di danni causati dall'uso improprio dei nostri spalmati.

To avoid permanent stains, light coloured products should not be brought into contact with textiles and clothing coloured with unfixed dyes. We cannot guarantee the ability to remove unknown dyes from light coloured products. Please note that we cannot be liable for damages caused by inappropriate use of our products.

La Montbel si riserva di applicare i tessuti utilizzando il verso più consono all'articolo prescelto.

Unless specified otherwise Montbel will use its discretion to determine the direction of fabric than best suits the model selected.



Minimal Charm.

I colori naturali sono una dichiarazione di eleganza e ricercatezza.
Natural colors are a statement of elegance and sophistication.

SETA



NUBE



CREMA



PERLA



TAUPE



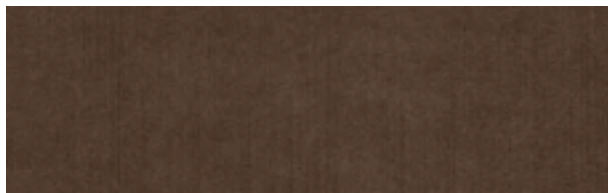
ALU



VISON



BRONCE



CARRO



TITAN



ANTHRACITE



ZERO



LIGHT BLUE



SKY BLUE



OLTRAMARE



NAVY



COBALT

Cat. A

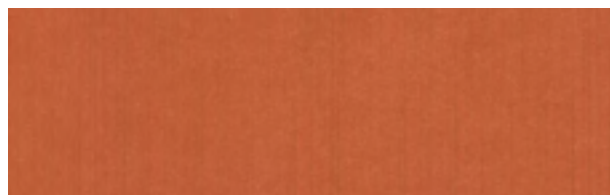
ecopelle . eco-leather



YELLOW



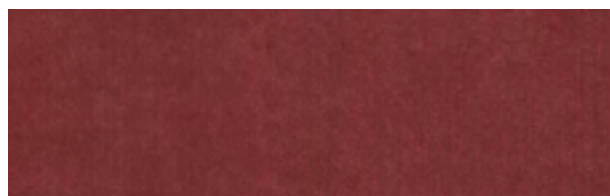
ORO



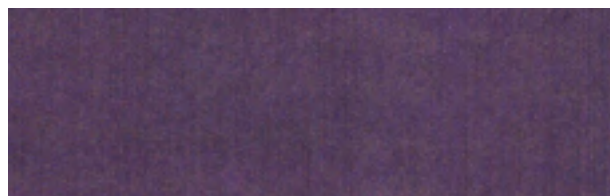
ORANGE



ROJO



VINO



LILA



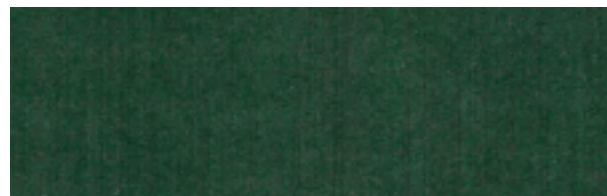
PLATA



SALVIA



KIWI



GREEN



MARRON



NEGRO


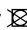
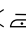

Composizione / Composition
100% Poliestere/ Polyester

Peso / Weight
820 g/m²

Resistenza allo strappo / Tear strength
60 N/cm - Weft
40 N/cm - Warp

Resistenza alla rottura / Breaking strength
100 N/cm - Weft
90 N/cm - Warp

Antihydrolysis Jungle Test
10 weeks

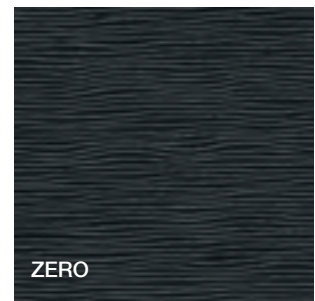
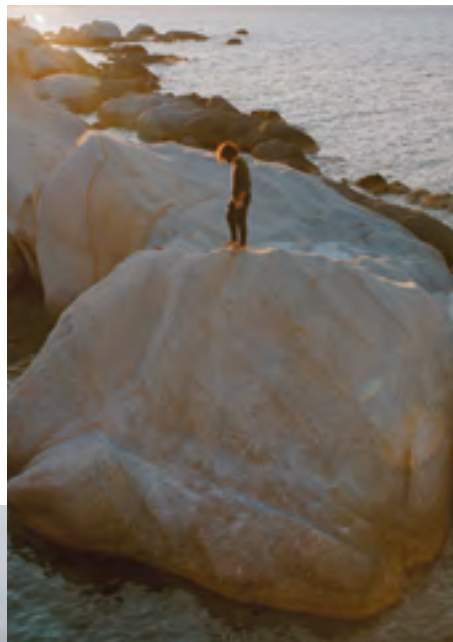
Manutenzione / Maintenance
Non usare mai cera, smacchiatori o solventi. / Never use polish, stain removers or solvent.    

Solidità del colore / Colour fastness
4

Abrasione Martindale / Abrasion Martindale
>200.000 cycles

Resistenza al calore / Heat resistance
100C°

Resistenza al fuoco / Fire resistance
UNI EN 1021 parts 1-2, BS 5852 cigarettes & match, M2 France (Optional)



Waves

Il vento come le onde rincorre uno spirito di leggerezza delicato come le note dell'azzurro. Wind like the waves chases a sense of lightness that is as delicate as the light blue shades.

PERLA



NUBE



PERLA



CREMA



BIANCO



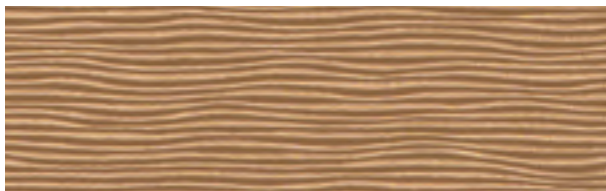
ALU



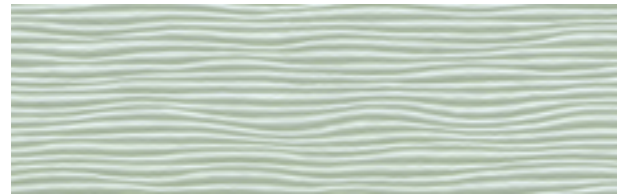
TAUPE



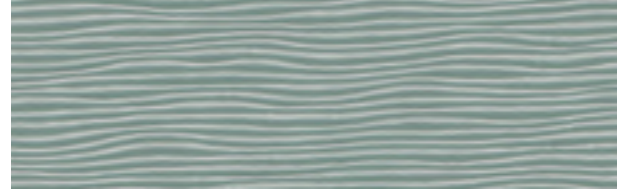
VISION



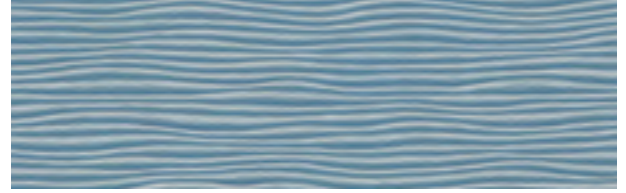
BRONCE



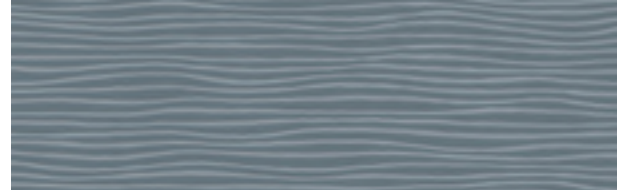
ACQUAMARINE



LIGHT BLUE



SKY BLUE



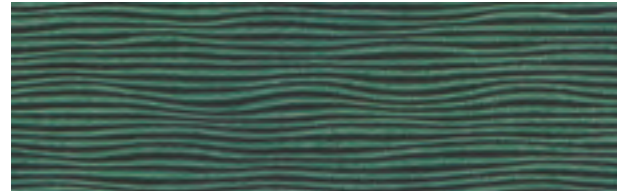
OLTRAMARE



NAVY



COBALT



GREEN



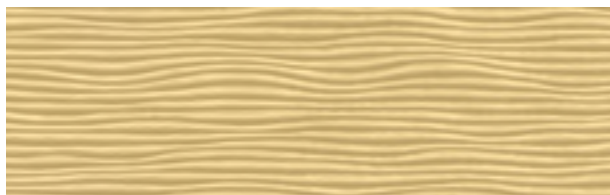
KIWI

Cat. B

ecopelle . eco-leather



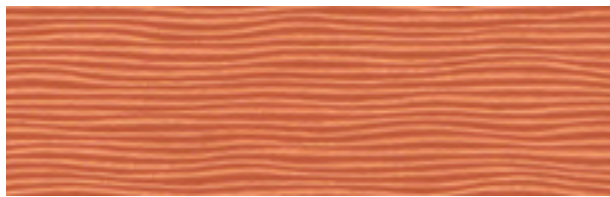
SALVIA



ORO



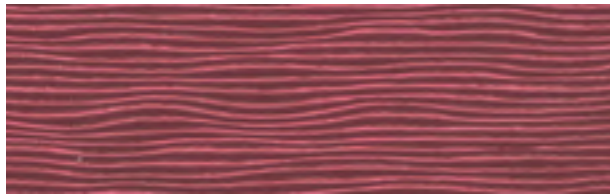
YELLOW



ORANGE



ROJO



VINO



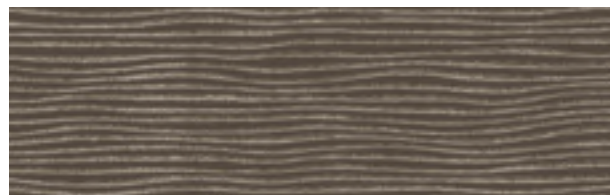
LILA



PLATA



ANTHRACITE



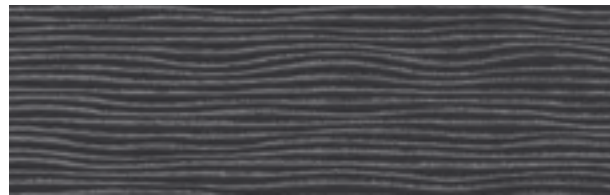
TITAN



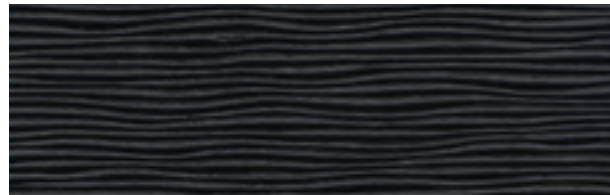
CARRO



MARRON



NEGRO



ZERO

Composizione / Composition
70% PVC - 30% PV

Peso / Weight
820 g/m

**Abrasion Martindale /
Abrasion Martindale 12 Kpa**
200.000 cycles

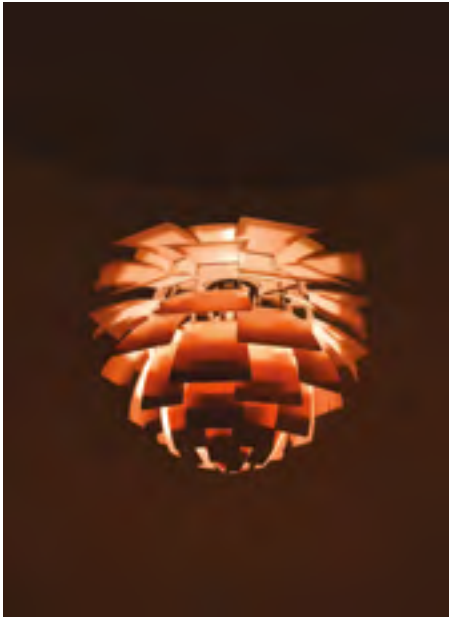
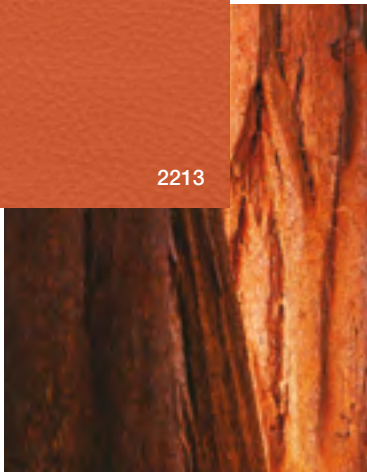
**Solidità del colore alla luce /
Colour fastness to light**
4

Supporto/ Back coating
100% Polyester

Resistenza al fuoco / Fire resistance
EN 1021 Part 1&2, BS 5852 Part 1&2

Resistente / Resistant
10 weeks = +/- 10 years
Jungle test

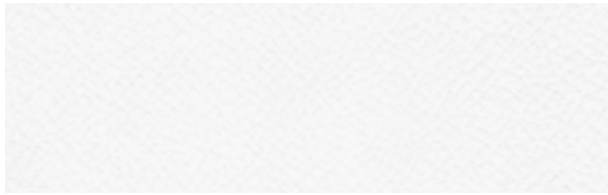
Esente da / Free
Ftalati/ Phthalates
Meet Reach Standard - Eco & Free



Autumn warmth

Caldi e incisivi i colori autunnali ci fanno sentire subito a casa come l'abbraccio di un amico. Warm and bold autumn colors make us feel immediately at home like a friend's hug.

ADVAN



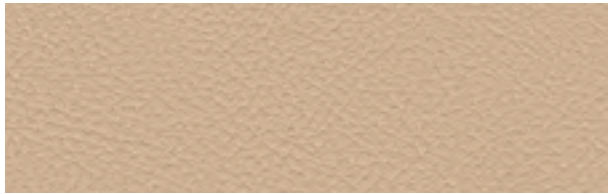
2201 (Ex 3022)



0832



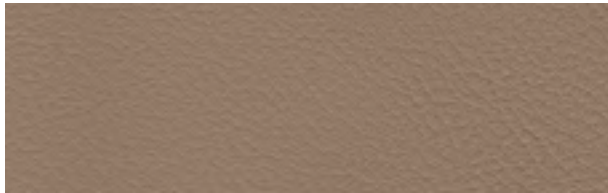
9014



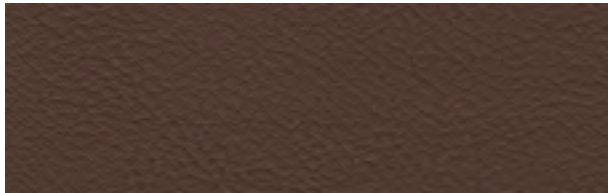
5464



8872



2623



3972

Cat. B



8832



1684 New



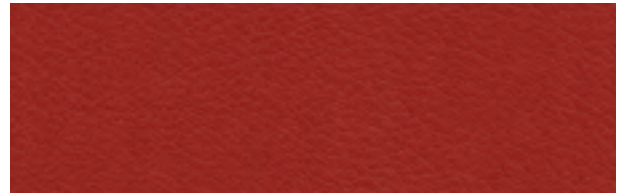
2213 (Ex 6872)



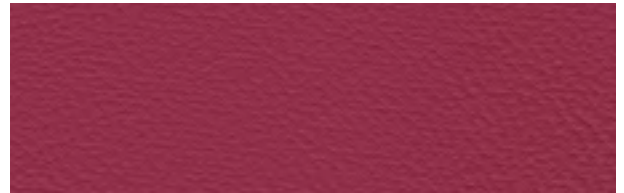
0564



1464

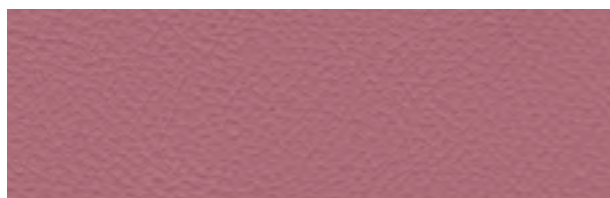


0294 New

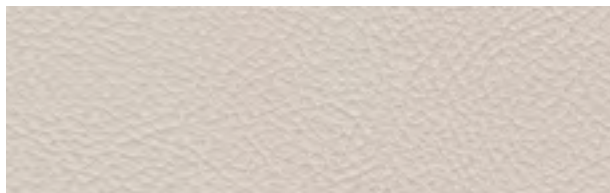


8523

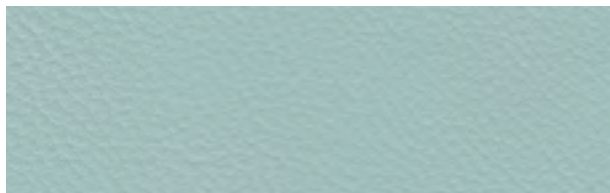
ecopelle . eco-leather



6014



7014



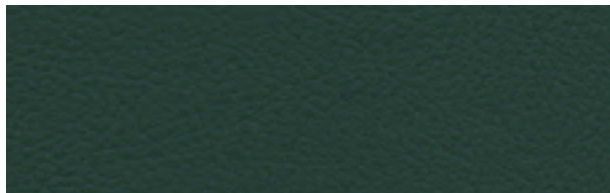
7972



9114



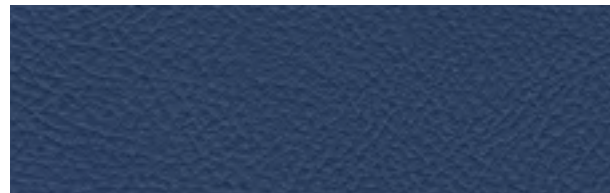
0214



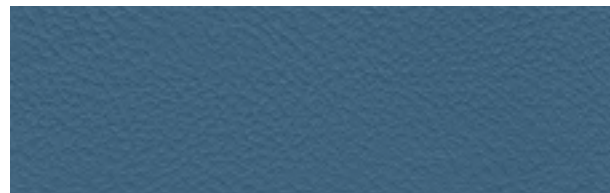
2336 New



6564



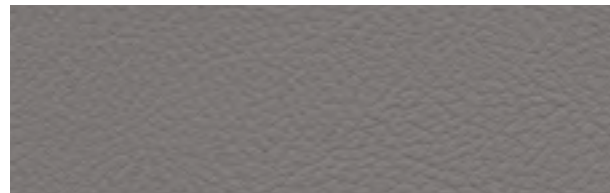
9972



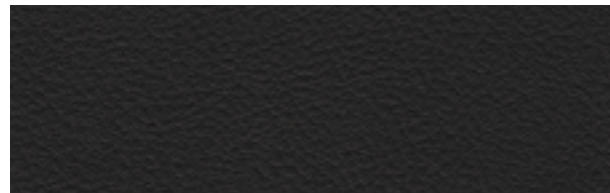
8972



8364 New



1723



0342

Composizione / Composition
83% PVC - 17% CO/PL

Peso / Weight
650 +/-50 g/m²
DIN EN ISO 2286-2

**Solidità del colore alla luce/
Colour fastness to light**
< 6 scala blu/ blue scale

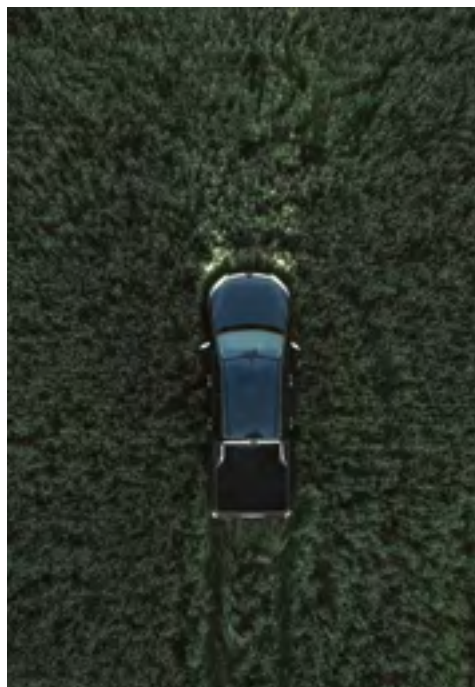
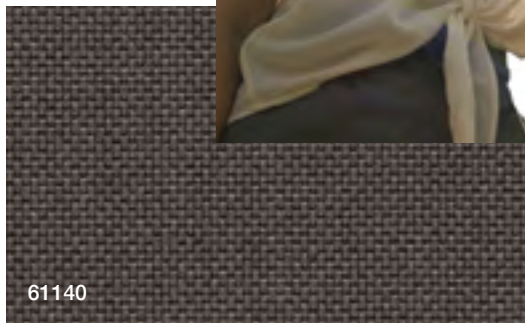
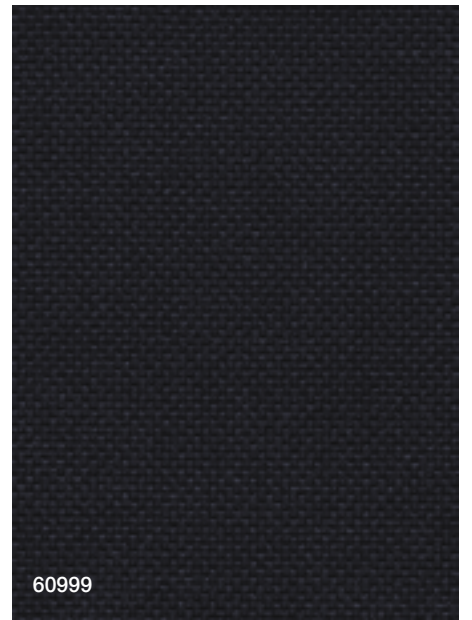
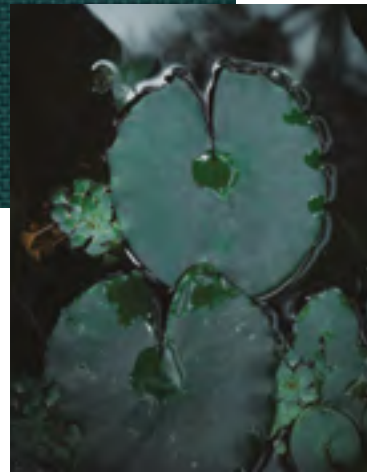
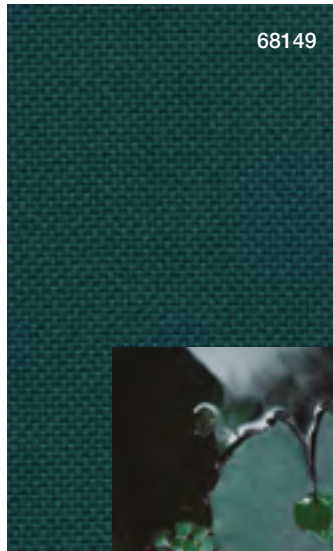
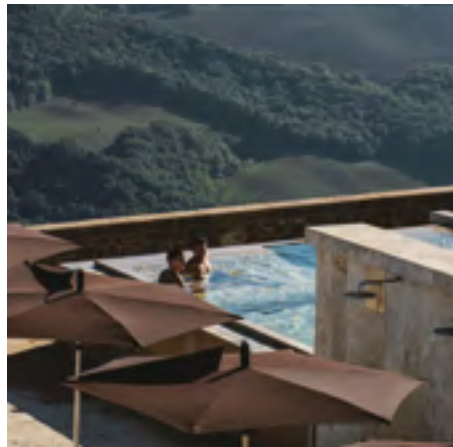
Flessibilità/ Flexibility
Temp. 20 C°
100.000 cicli/ cycles
DIN 53351

**Resistenza al fuoco /
Fire resistance**

Class 1/IM
DIN 75200, BS 5852, B1AT, 5.3-CH -
FMVSS 302, DIN EN1021 PARTE 1+2,
M2, UNI 9175 ITALIA

**Abrasione Martindale /
Abrasion Martindale 12 Kpa**

100.000 cicli/ cycles
DIN EN ISO 13934-1, BS 5690

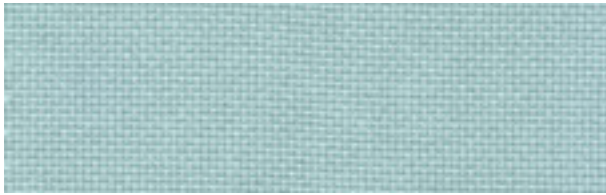


Green Away

Negli spazi di verde che ci ritagliamo lo sguardo trova respiro.
It's in the green spots that we carve for ourself that we get a break.

UNI

Cat. B



68168



67070



66139



66140



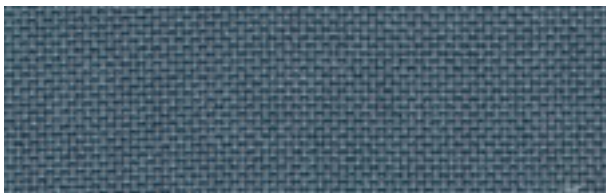
66137



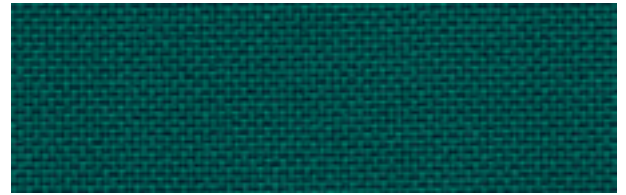
66135



67071



60081



68152



68149



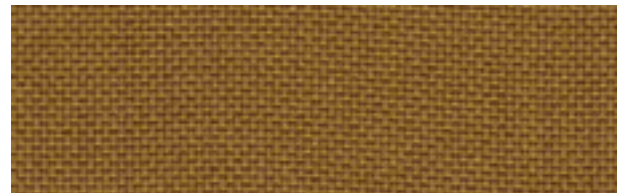
68169



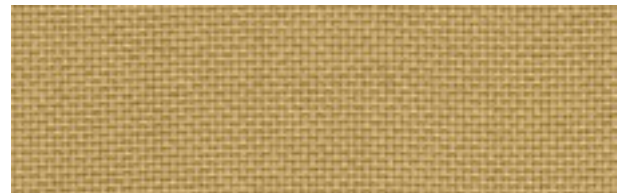
68153



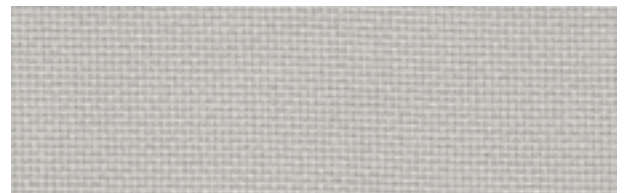
62071



61143



61142



60093



64183



64175



64172



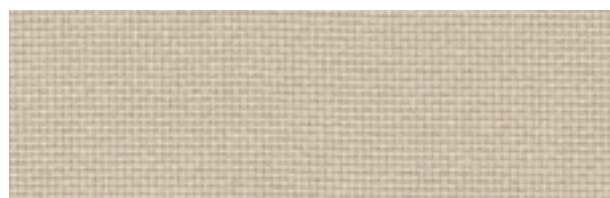
64171



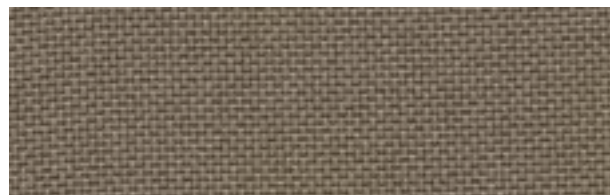
63080



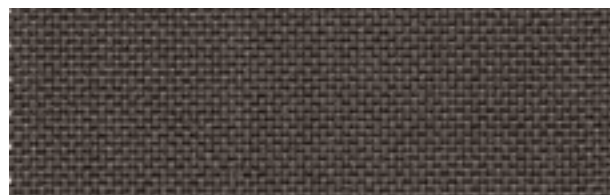
60079



61138



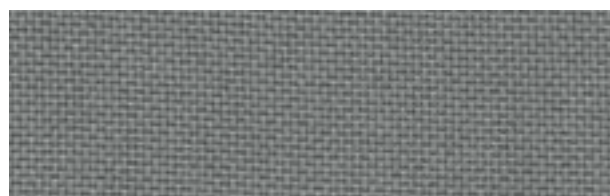
61139



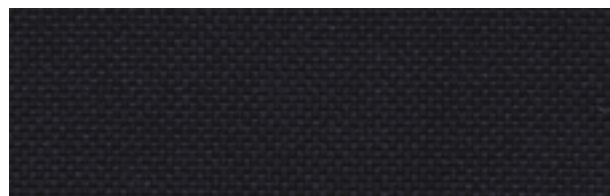
61140



60080



60083



60999

Composizione / Composition

100% Trevira CS

Peso / Weight

435 g/m (14.03 oz/lin. yd.)

Infiammabilità / Flammability

EN 1021 1&2, BS 5852 0&1, BS5852 Crib 5, DIN 4102.B1, FAR/JAR 25 853, önorm B3825 B1-Q1, NFP92-503/4/5, M1, Class Uno UNI 9175 Class 1, EMME/BS 7116 Med. Hazard, AM 18 NF D80-013, CA TB 117-2013

US ACT

AATCC 16 Lightfastness pass, AATCC 8 or 116 wet/dry crocking, California Bulletin CAL117-E Class 1 ASTM D4157-07 Wyz Abrasion (HDU) ASTM D3511 Pilling, CA TB 117-2013

Pilling

5
Scale 1-5, max. 5 - EN ISO 12945-2

Resistenza all'abrasione (Martindale) / Abrasion resistance (Martindale)

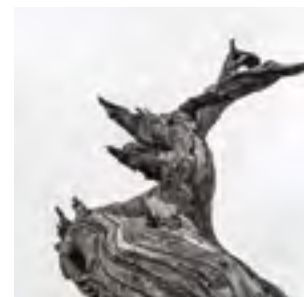
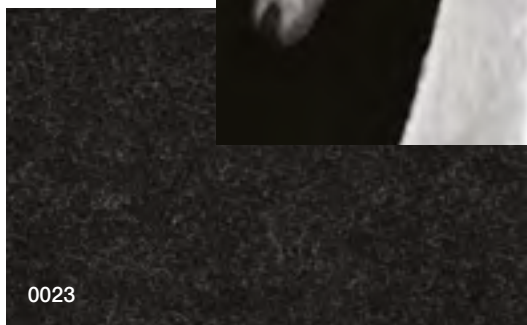
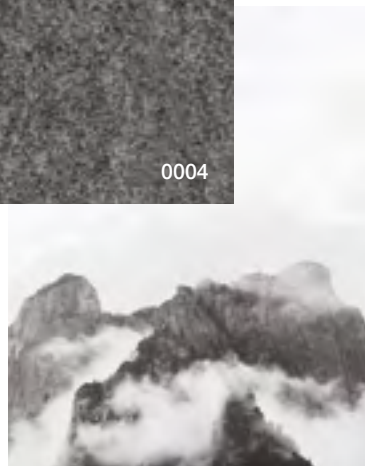
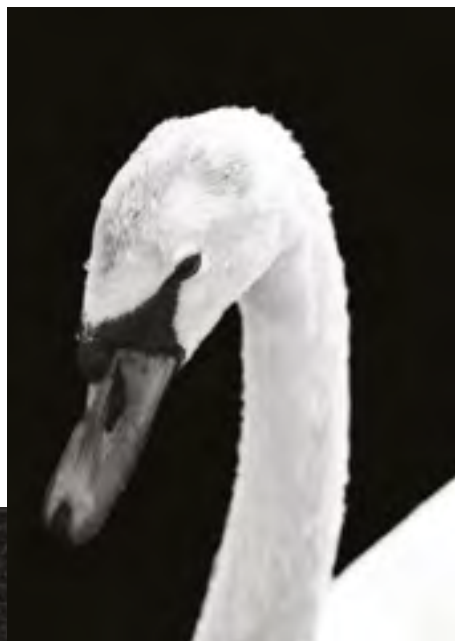
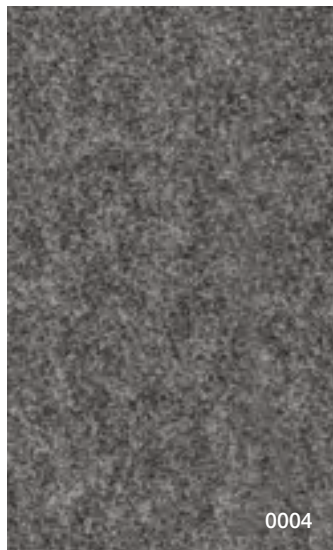
100.000 rubs

Resistenza del colore alla luce / Colour fastness to light

5-8
Scale 1-8, mx. 8 - EN ISO 105-B02

Solidità del colore allo sfregamento / Colour fastness to rubbing

4-5 umido-secco/wet-dry
Scale 1-5, max. 5 - EN ISO 105-X12

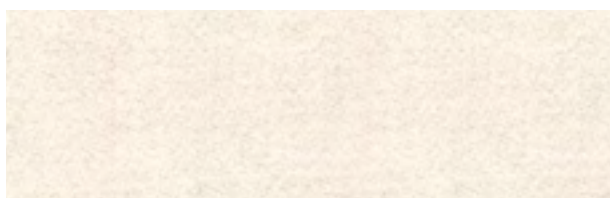


Clean Classic

Il bianco e il nero in tutte le loro sfumature seducono con il loro stile rigoroso e classico fornendo le basi per molteplici creazioni. Black and white shades intrigues with a classic and rigorous style that can be the starting point for new creative ideas.

DANZI

Cat. B



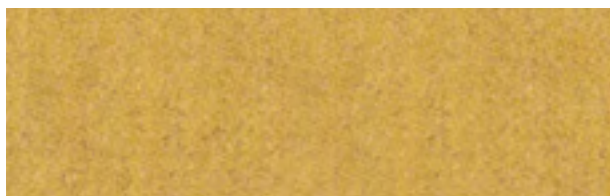
0026



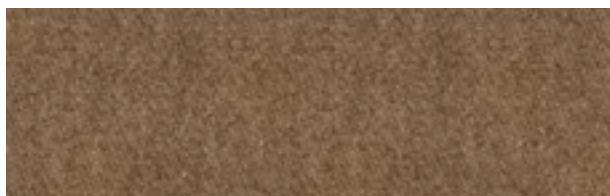
0029



0056



0063



0022



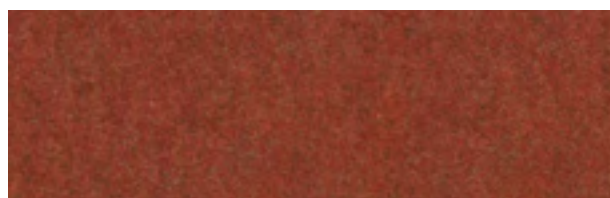
0015



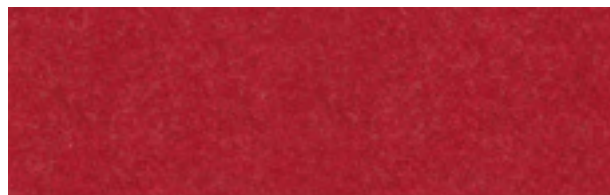
0062



0033



0058



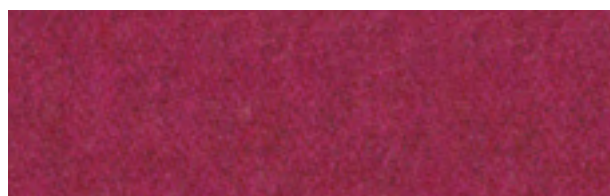
0028



0053



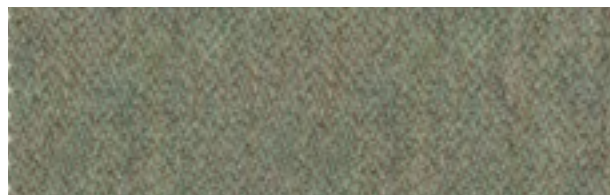
0020



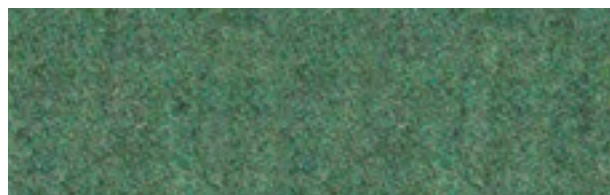
0050



0040



0043



0064



0027



0059



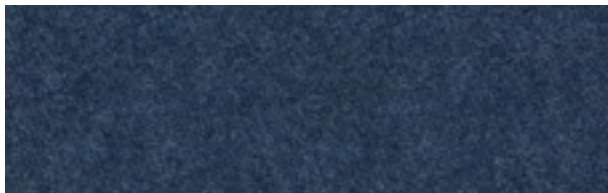
0030



0016



0069



0014



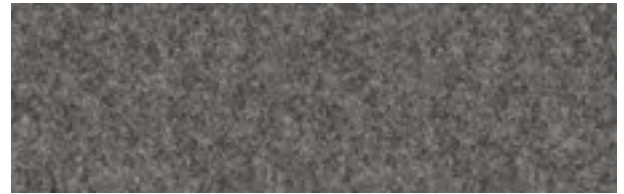
0057



0032



0003



0004



0002



0023

Composizione / Composition
70%WO - 20% PL - 5% PA - 5% AF

Peso / Weight
490 g/m

**Solidità del colore alla luce /
Colour fastness to light**

4-5
UNI ISO 105 B02

**Solidità del colore allo sfregamento /
Colour fastness to crocking**

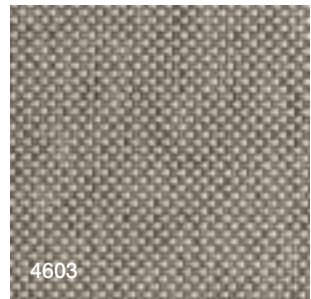
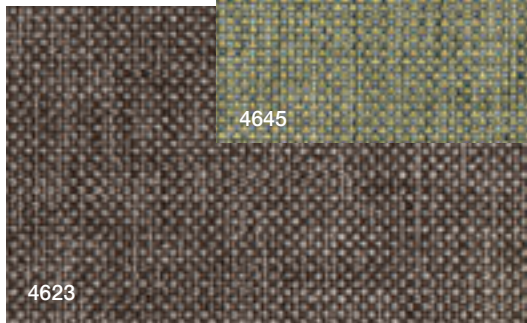
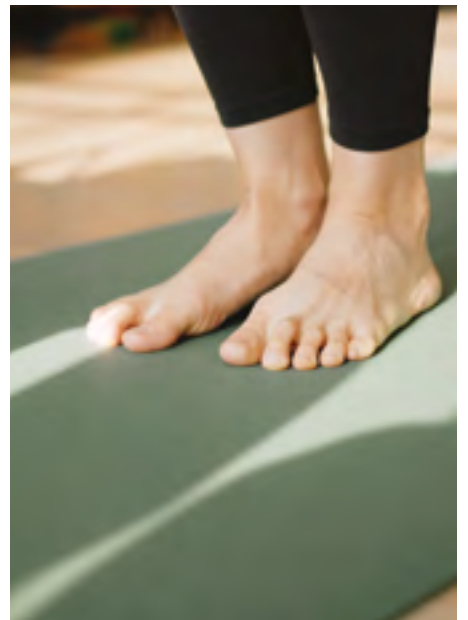
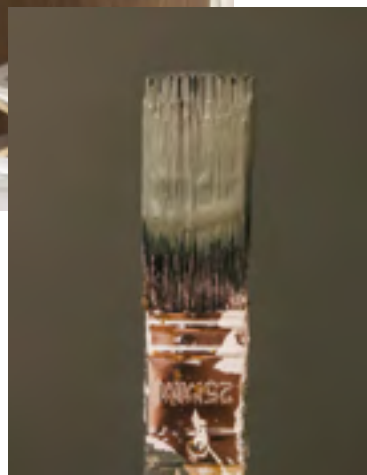
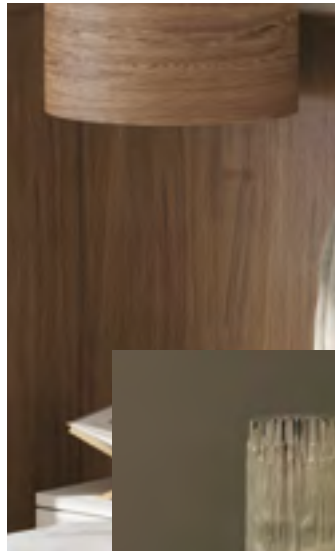
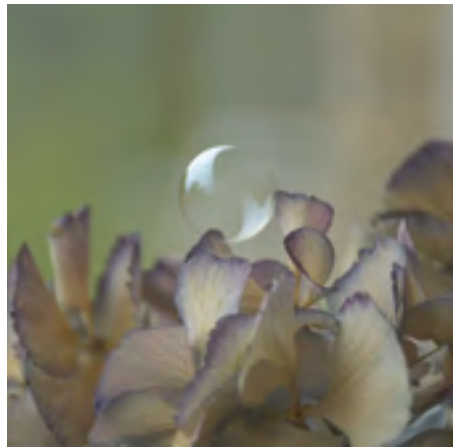
4-5 Dry / A secco
4 Wet / Ad umido

Martindale
> 40.000
(UNI EN ISO 12947 12 kpa)

Pilling
500 cycles, 4/5 - 1000 cycles 4, 2000
cycles, 3-4 - 5000 cycles, 3-4 (12945-2)

Resistenza al fuoco / Fire resistance
Cigarettes Test (EN 1021/1)
Match Test (EN 1021/2)

Manutenzione / Maintenance
☒ ☒ ☒ ☒ ☒



Old Sage

I toni sbiaditi della salvia sono un invito alla lentezza e alla meditazione. The sage faded tones invite to slow down and to meditate.

VERA

Cat. B



4606



4600



4601



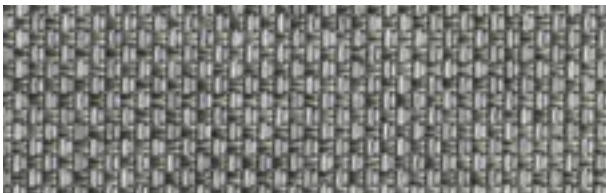
4611



4617



4603



4683



4620



4623



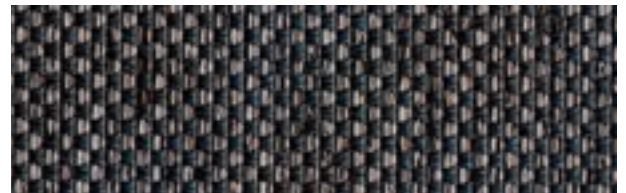
4631



4691



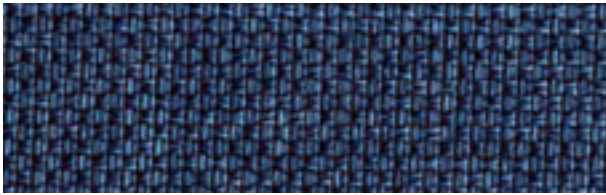
4686



4689



4645



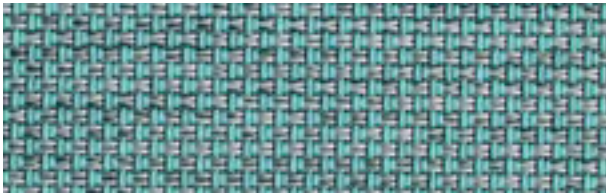
4673



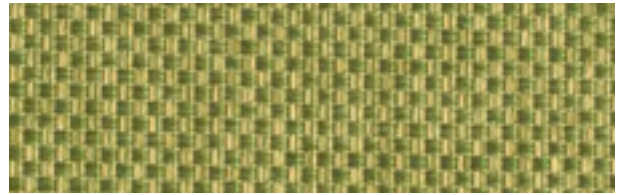
4665



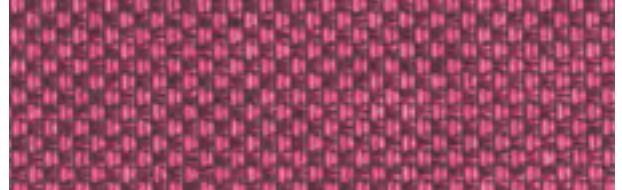
4675



4669



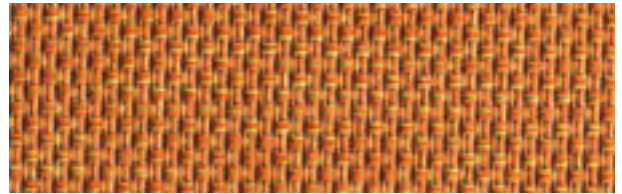
4642



4661



4656



4649

 **ACTIVE LINE STAIN PROTECTION**

Composizione / Composition
100% Polyester
with flame retardant backcoating

Peso / Weight
765 gr/m

Pilling

5

**Resistenza all'abrasione /
Abrasion resistance**
73.000

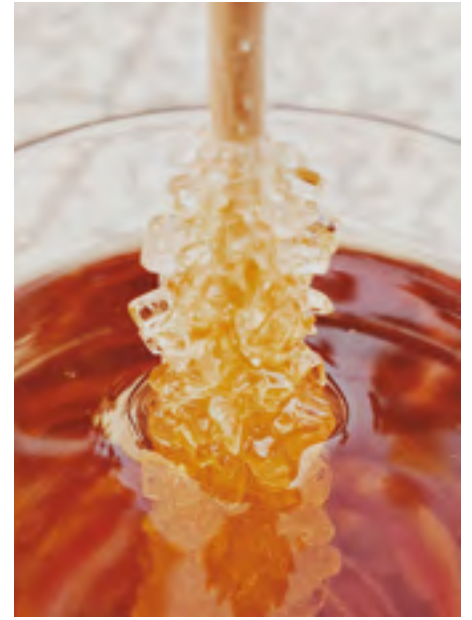
**Solidità del colore alla luce
artificiale / Colour fastness
to artificial light**

5

**Resistenza al fuoco /
Fire resistance**

DIN 4102 (B2), EN 1021 1&2, BS5852
crib5 1&2

1050



950

Ruby lust.

Le sfumature del rosso avvolgono e seducono con una potenza espressiva dal forte impatto visivo.

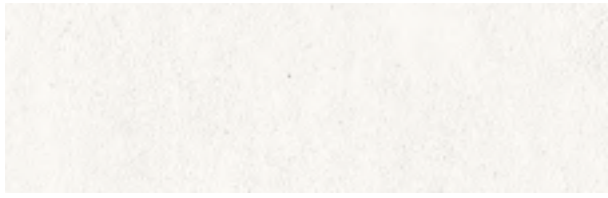
Red hues give an enveloping feel and intrigues us thanks to their powerful visual impact.



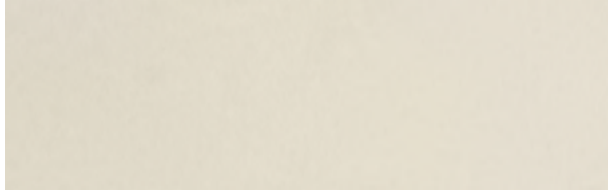
4350

EXTREMA

Cat. C



150



3750



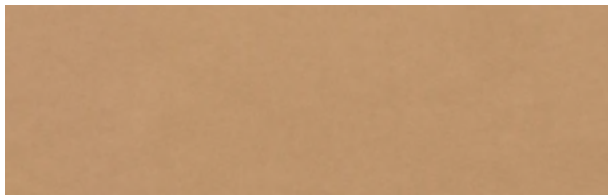
250



350



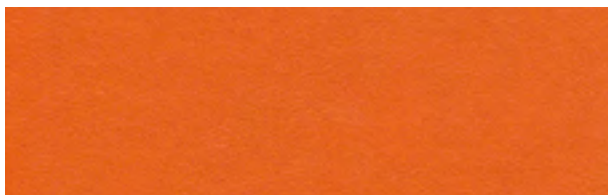
450



1150



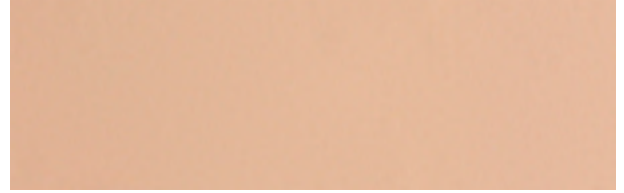
650



750



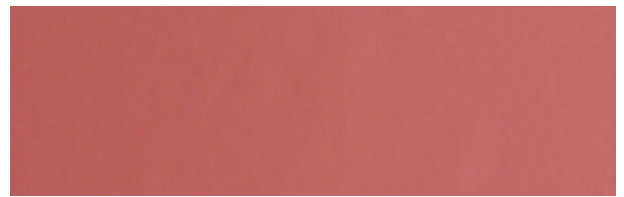
850



3150



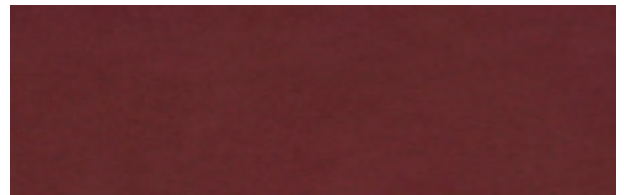
4050



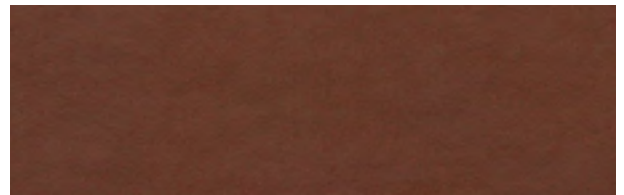
4350



950



1050

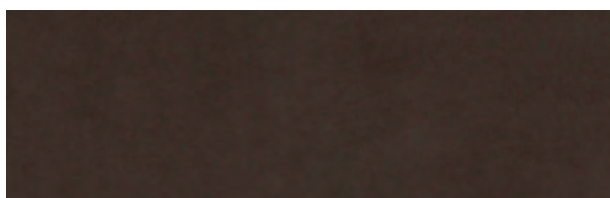


1250

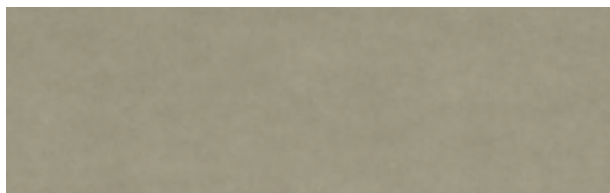


3250

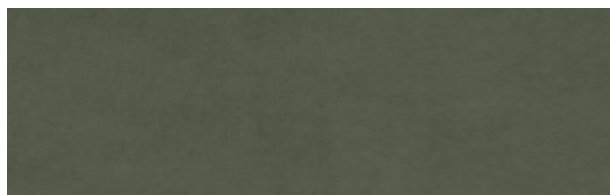
ecopelle . eco-leather



1350



1450



1550



3950



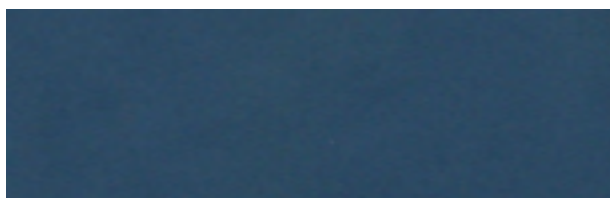
4550



1750



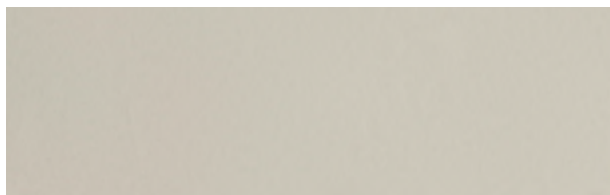
4250



1950



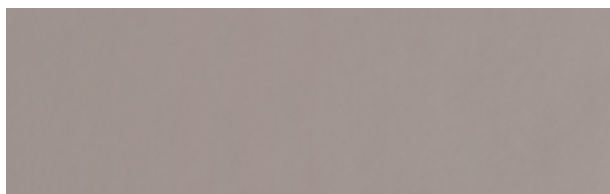
3450



3650



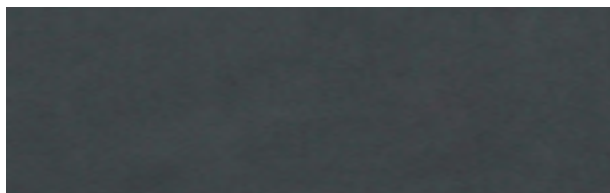
2050



4450



2250



2150

Composizione / Composition
63% PU - 37% CO

Peso / Weight
480 g/m²

Resistenza al fuoco / Fire resistance
IMO Resolution A.652(16)/89, EN 1021-2/93, BS 5852-1/79, BS5859/90 S.4 crib 5, UNI 9175/87e 9175 FA-1/94 Classe 1IM (uno I emme)

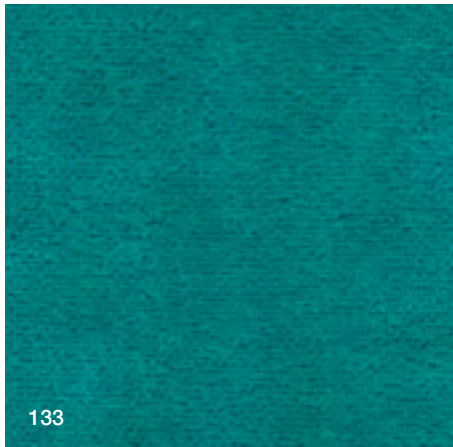
Trattamento / Treatment
Ultra-fresh, antibatterico, antiacaro. Determina freschezza igienica duratura. / *Ultra-fresh, antimicrobial, antiacarus. It determines durable hygienic freshness.*

Resistenza all'abrasione / Abrasion resistance
150.000 rubs
EN ISO 12947-2/2000

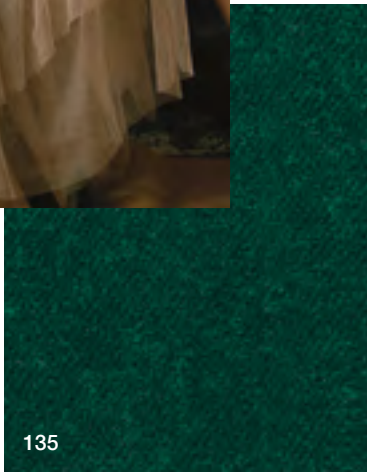
Solidità del colore alla luce / Colour fastness to light
5-6 - Scale 1-8 max. 8
EN ISO 105-B02

Solidità al sudore / Solidity to sweat
Acid/alkaline 4-5 - Grey scales
UNI EN ISO 105 E04/98

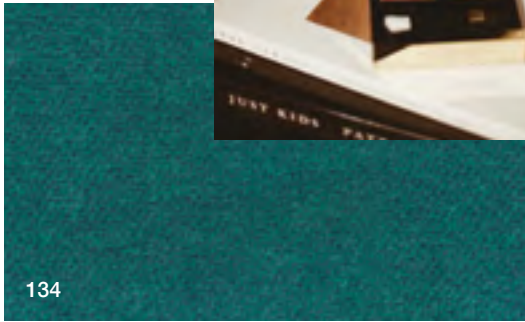
Tropical test
70 C° - Days 60 Unchanged



133



135



134



Fancy soiree.

La magia della sera ha il sapore di un incontro speciale e promette di regalare momenti da ricordare.

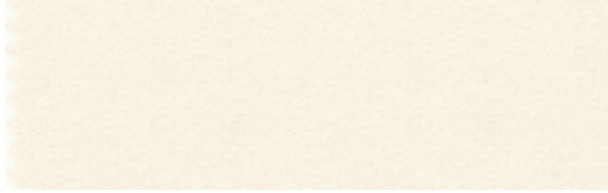
The magic of the night brings the excitement of a special gathering and promises to give memories to be remembered.

SUPER

Cat. C



101



103



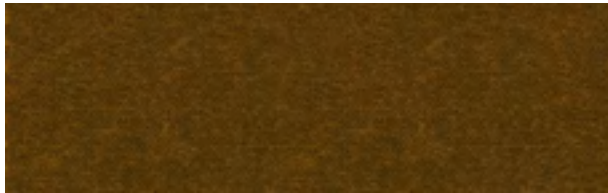
104



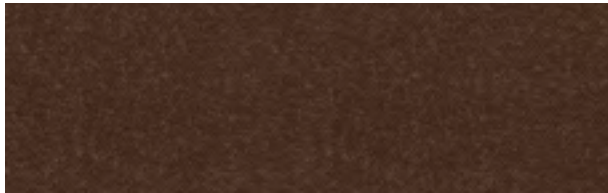
109



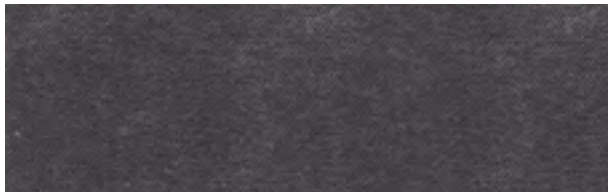
143



142



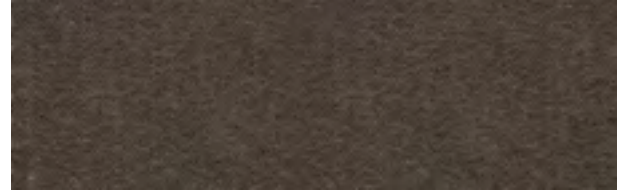
145



151



148



149



144



140



131



133



132



125



134



135



136



138



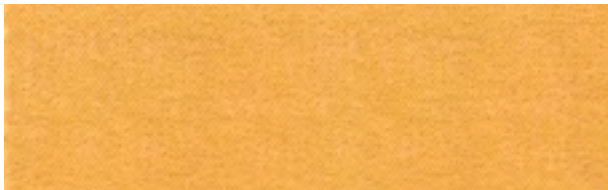
137



139



106



107



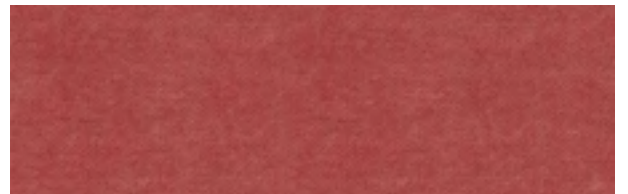
108



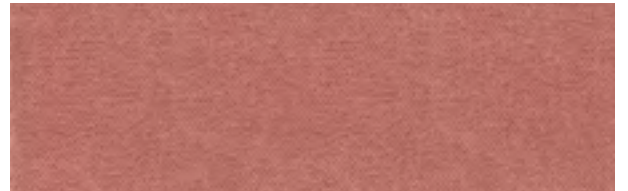
110



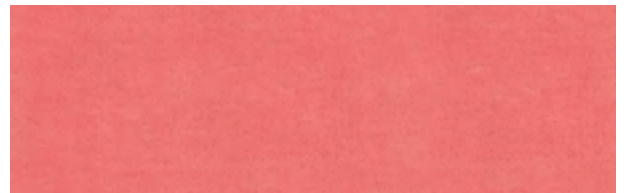
112



113



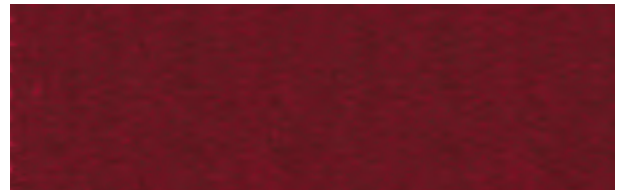
114



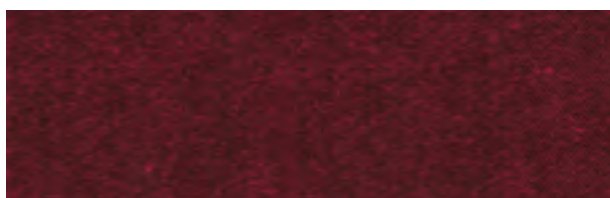
115



117



118



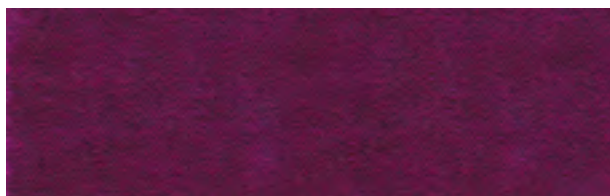
119



120



121



122



128



127



126



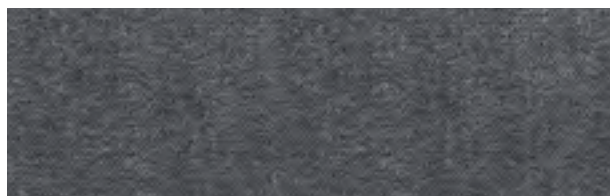
130



153



152



150



147

Composizione / Composition
100% Trevira CS

Peso / Weight
400 g/m²

Pilling
5
UNI EN ISO 12945-2

**Resistenza all'abrasione /
Abrasion resistance**
60.000 cycles
UNI EN ISO 12947-2

**Solidità del colore allo sfregamento
a secco/ Colour fastness to dry
rubbing**

4
UNI EN ISO 105-X12

**Solidità del colore allo sfregamento ad
umido/ Colour fastness to wet rubbing**

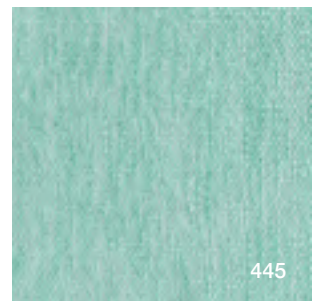
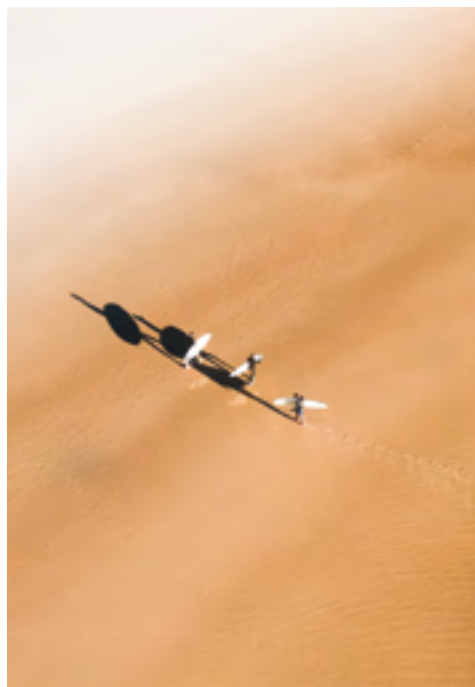
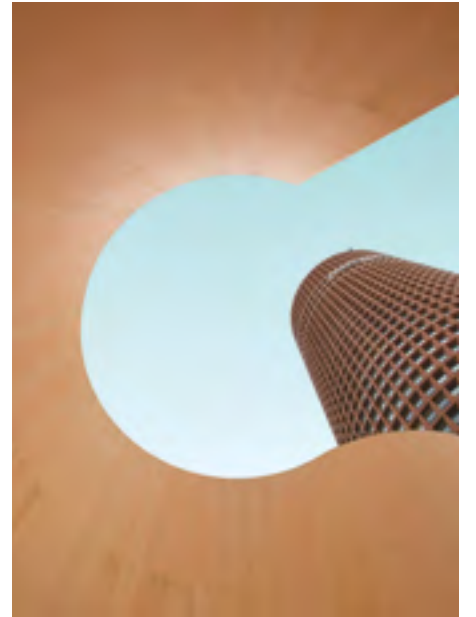
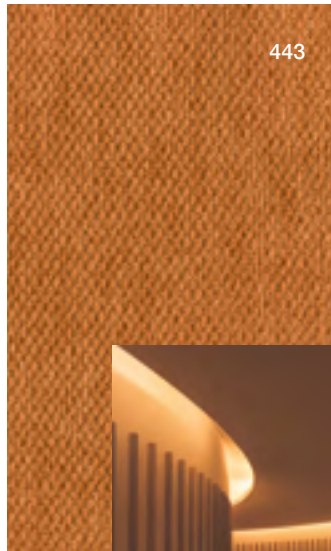
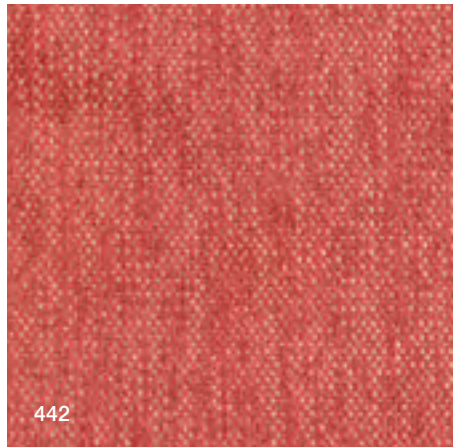
4
UNI EN ISO 105-X12

**Solidità del colore alla luce /
Colour fastness to light (Xenotest)**

>5 blue scale
UNI EN ISO 105-B02

**Resistenza al fuoco /
Fire resistance**

EN 1021-1, EN 1021-2, UNI 9175 - 1IM,
UNI 9177 - Class1, BS 5852 - CRIB 5,
NF 92.503-M1, DIN 4102 -B1



Coral dust.

L'atmosfera estiva del corallo accende gli ambienti con un energia fresca e frizzante. The summery feel of the coral shades lighten up the room with a fresh and sparkly energy.

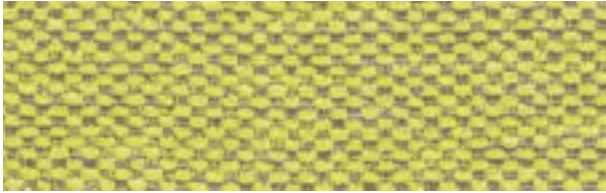
LAS VEGAS



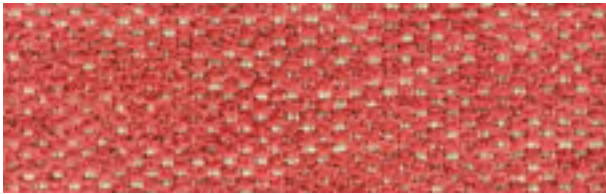
441



445



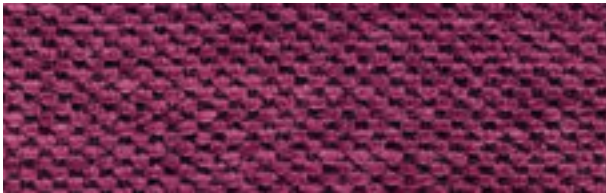
444



442



443



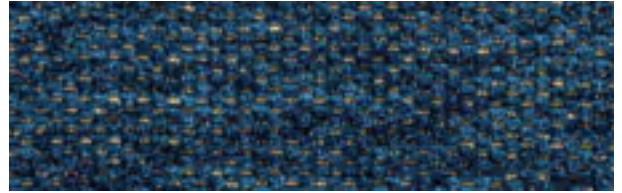
447



449



440



448



540



446

Cat. C

Composizione / Composition
100% PES FR
Polyester fireretardant

Peso / Weight
579 gr/m

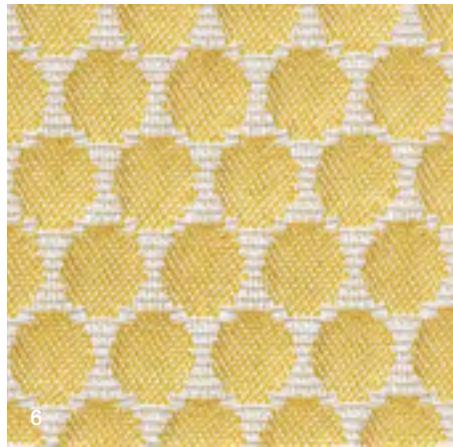
Pilling
4-5

**Resistenza all'abrasione /
Abrasion resistance**
50.000

**Solidità del colore alla luce
artificiale / Colour fastness
to artificial light**
4-5

**Resistenza al fuoco /
Fire resistance**

DIN 4102 (B1), EN 1021 1&2,
BS5852 CRIB5 1&2, UNI 9177
(Classe Uno), IMO Part 7&8



6



14



13



Organic land.

La poesia di un paesaggio all'imbrunirsi regala sfumature avvolgenti ricche di fascino. The poetic view of a landscape when the nightfall arrives reveals a charming symphony of colors.

BOLLE

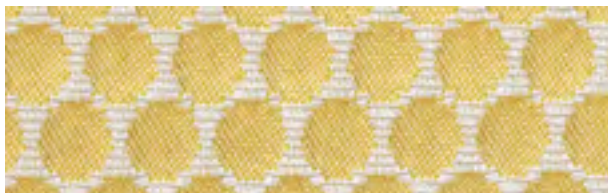
Cat. D



2



14



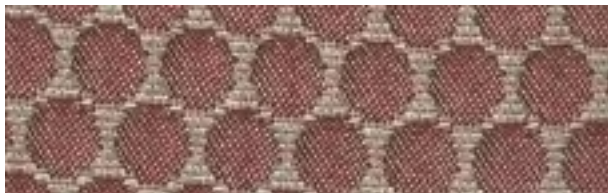
6



3



7



10



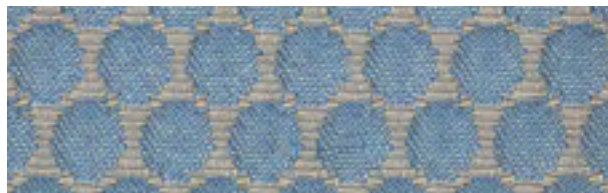
15



9



11



8



16



1



13



12

Composizione / Composition

100% PES

Peso / Weight

420 g/m²

Solidità del colore allo sfregamento ad umido / Colour fastness to rubbing (wet)

4/5 grey scale
UNI EN ISO 105-X12

Resistenza al fuoco / Fire resistance

BS5852:2006 (p.11 CRIB 5), EN 1021-1, EN 1021-2, UNI 9175:2010 Classe 1 IM

Pilling

4
UNI EN ISO 12945-2

Resistenza all'abrasione / Abrasion resistance

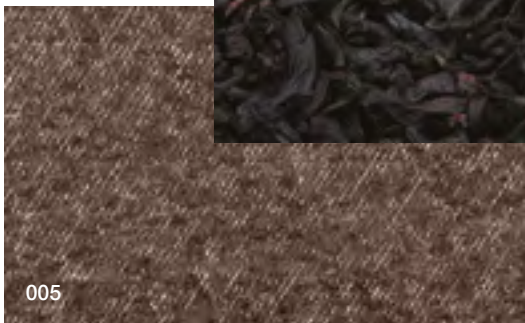
35.000 cycles
UNI EN ISO 12947-2

Solidità del colore alla luce artificiale / Colour fastness to artificial light

5/6 blue scale
UNI EN ISO 105-B02

Solidità del colore allo sfregamento a secco / Colour fastness to rubbing (dry)

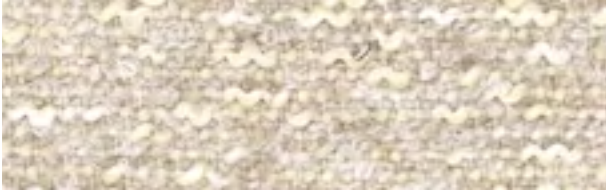
4/5 grey scale
UNI EN ISO 105-X12



Black Tea.

Contrasti netti ridisegnano lo spazio in un gioco di pieni e vuoti.
Sharp colours contrasts defines the space with a positive/negative game.

TOBIA



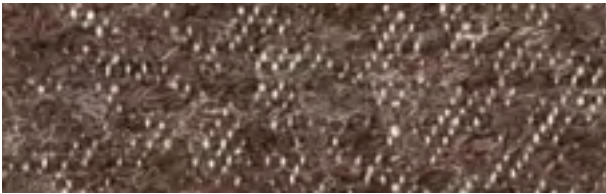
002



006



007



005

Cat. D

Composizione / Composition
 26% Viscose - 20% Acrylic
 14% Cotton - 12% Polyester
 12% Flax - 8% Wool - 8% Modal

Peso / Weight
 1060 gr/m

Pilling

3/4

**Resistenza all'abrasione /
 Abrasion resistance**

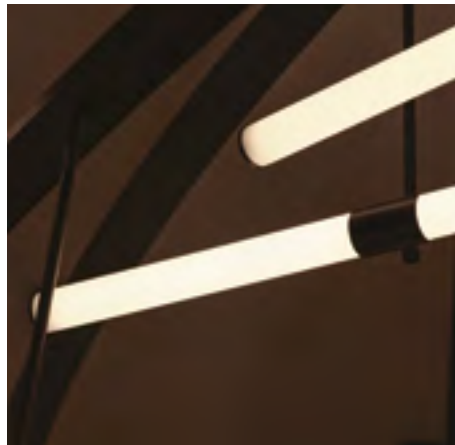
30.000 rubs

**Solidità del colore alla luce artificiale /
 Colour fastness to artificial light**

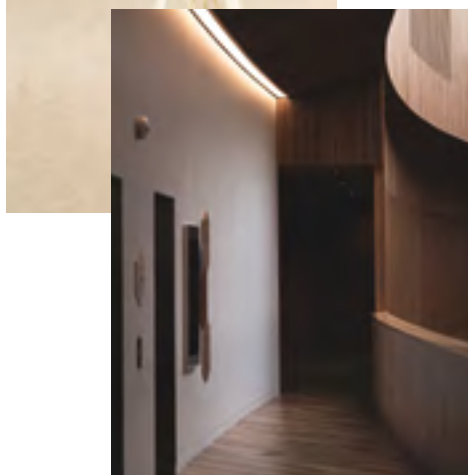
5

**Resistenza al fuoco /
 Fire resistance**

BS5852 crib5



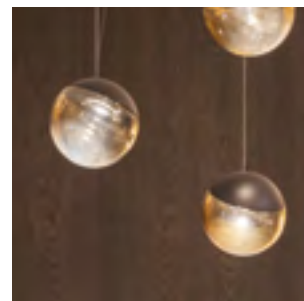
872



824



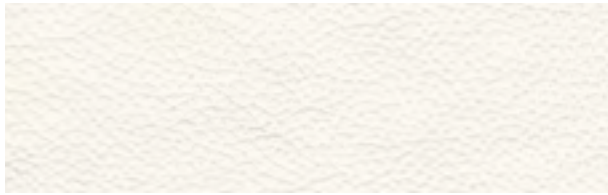
821



Milk Cholate

Lo stile senza tempo dei toni classici della pelle aggiunge naturale eleganza ad ogni ambiente. The timeless feel of the classic leather tones gives effortless charm to any interior.

POLO



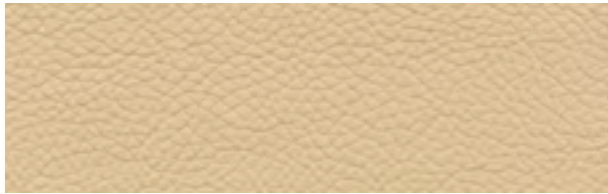
810



872



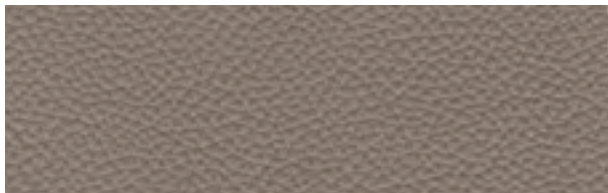
811



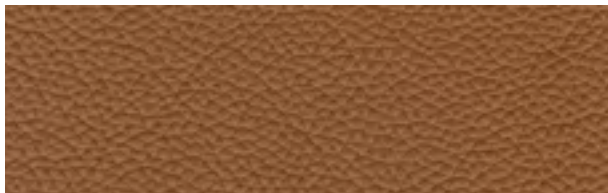
815



826



931



823



821



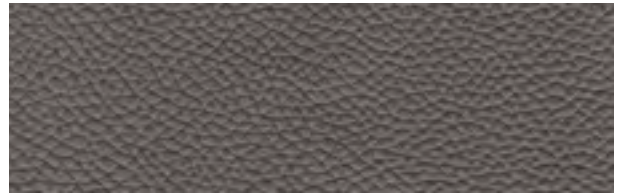
824



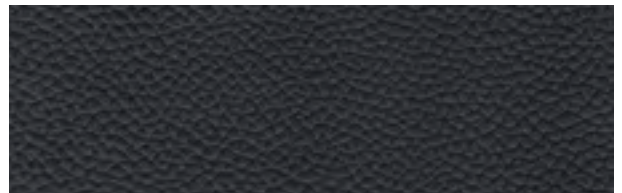
827



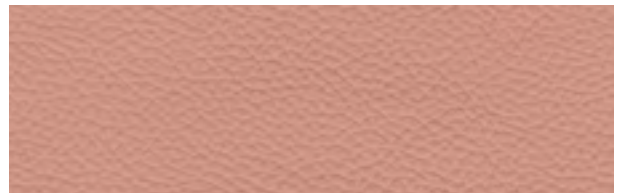
854



858

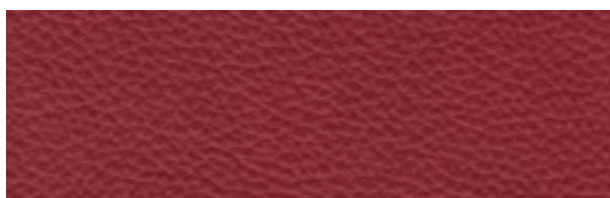


860

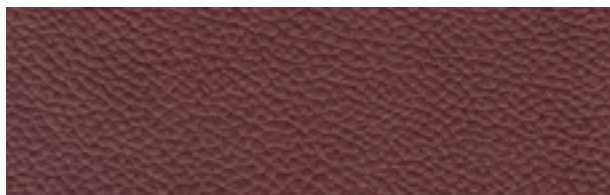


847

pelle . leather



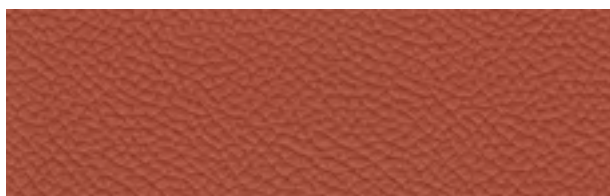
844



850



843



840



839



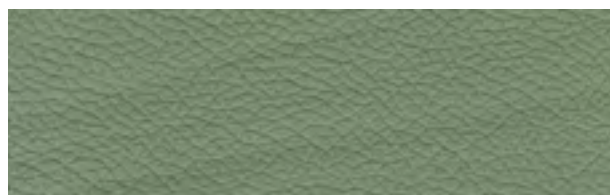
838



837



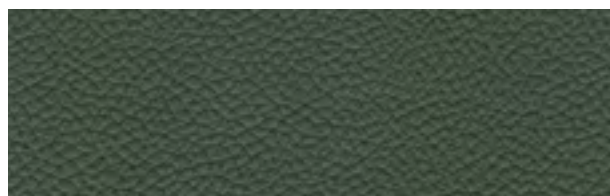
881



828



830



831



851



855



878

pelle . leather

Origine / Origin

Raw Hides (UE)

Peso / Weight

700 g/m²

**Resistenza alla flessione ripetuta /
Flex crack resistance**

20.000 cycles
ISO 5402

**Resistenza la fuoco /
Fire resistance**

British standard BS5852 Part 1 NI/O:
Cigarette test n°1 Match test; Imo FTP:
Part 8 - Resolution A.652 (16), NI/O:
Cigarette test NI/1: Match test

Spessore / Thickness

0.9 - 1.1 mm

**Solidità del colore alla luce /
Colour fastness to light**

Value 7 blue scale

**Solidità dello sfregamento ad umido
/ Wet rub fastness**

150 cycles value 4 grey scale
ISO 11640

**Solidità dello sfregamento a secco /
Dry rub fastness**

500 cycles value 5 grey scale
ISO 11640

credits

AD . Daniele Lo Scalzo Moscheri

Photo . emozioni.com

Fotolito . lucegroup.it

Stampa . sincromia.it

Aggiornamento Maggio 2023

Montbel Srl

Sales office

Via Braiduzza, 8

I-33048 San Giovanni al Natisone

Udine - Italy

T. +39 0432 743147/743233

Head office

Via D. Scuole, 30

I-33044 Manzano

Udine - Italy

T. +39 0432 750784

www.montbel.it - montbel@montbel.it

I colori dei tessuti esposti in questo catalogo sono indicativi e possono subire delle variazioni dal vero.

The colours of the fabrics displayed in this catalogue are indicative and may vary from the real.

I colori chiari non devono essere messi a contatto con tessuti e capi di abbigliamento trattati con coloranti non fissati (ad esempio jeans o derivati) o con scarse solidità di tintura, onde evitare macchie e aloni di coloranti di cui non possiamo garantire la pulitura. Vi informiamo di non poterci ritenere responsabili di danni causati dall'uso improprio dei nostri spalmati.

To avoid permanent stains, light coloured products should not be brought into contact with textiles and clothing coloured with unfixed dyes. We cannot guarantee the ability to remove unknown dyes from light coloured products. Please note that we cannot be liable for damages caused by inappropriate use of our products.

La Montbel si riserva di applicare i tessuti utilizzando il verso più consono all'articolo prescelto.

Unless specified otherwise Montbel will use its discretion to determine the direction of fabric than best suits the model selected.

