

THE ART OF CONTRACT

MATERIALS BOOK UPDATED

Montbel
made in Italy

La passione creativa e la ricerca
di uno stile unico e riconoscibile
hanno dato corpo alla collezione
tessile e di finiture Montbel.

Passion for creativity and the quest
for a unique, recognizable style
have brought about Montbel's
collection of textiles and finishes.



I nostri prodotti,
ricchi di arte del sapere,
diventano vera esperienza
e trasformano ruvidi oggetti
in sculture vellutate.

Rich in the art of knowing things,
our products become an authentic
experience, transforming coarse
objects into velvety sculptures.

Attitudine sartoriale.
A tailor's approach.

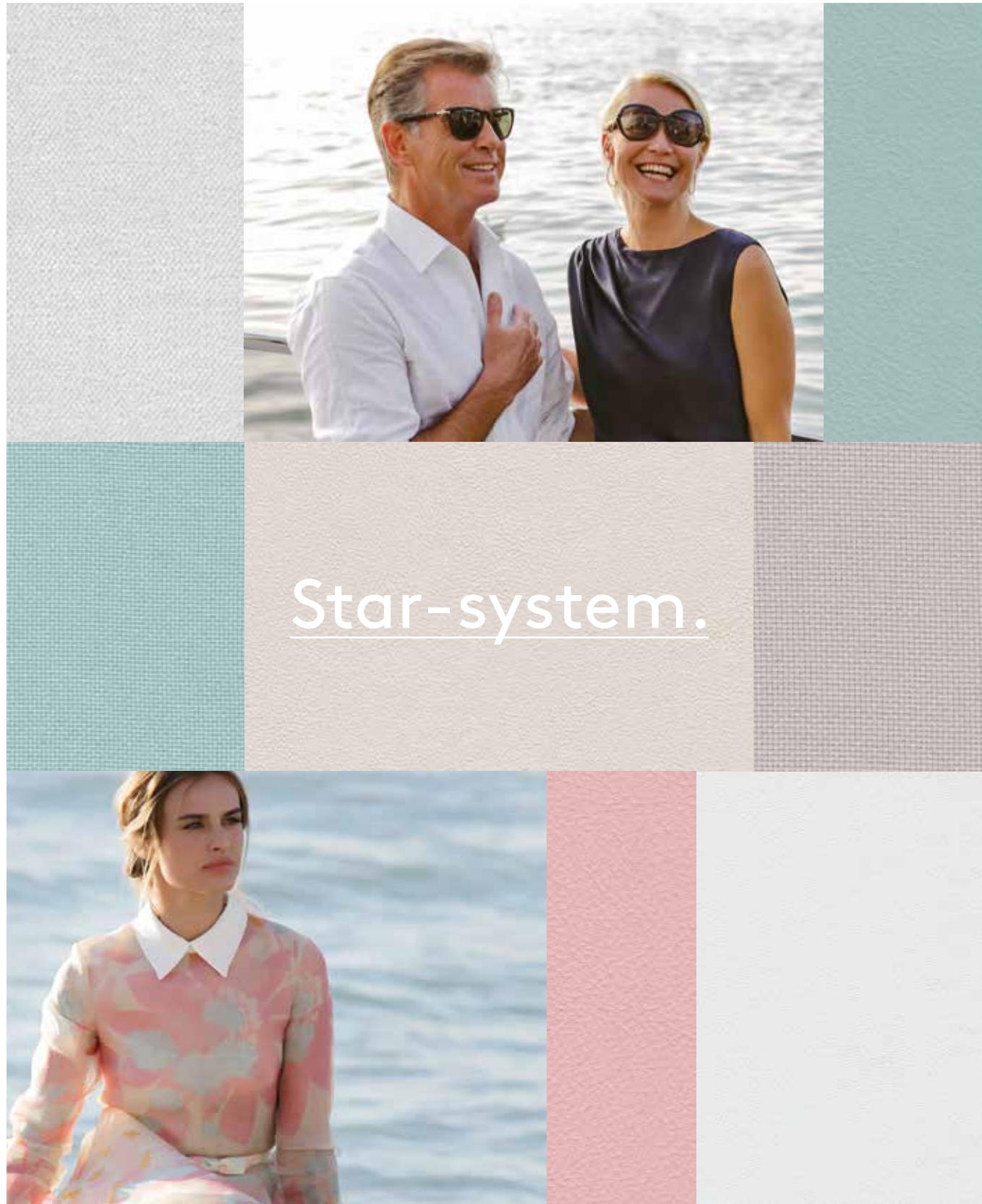
Forme e superfici si vestono di colori e sensazioni tattili differenti. La collezione tessile Montbel è il risultato di una selezione di materiali di qualità, e di pregio, sempre al passo con le tendenze. Tutti i nostri tessuti, pelli ed ecopelli rispettano le più severe normative tecniche in ambito Contract.

Forms and surfaces don multifarious colours and, likewise, arouse several tactile sensations. Montbel's textile collection is the outcome of its selecting materials that are qualitative, precious, and always in step with trends. All our fabrics, leather and eco-leather conform to the severest technical norms in the Contract context.

Il legno.
Testimone della nostra arte.
Wood. Witnessing our art.

Dietro di noi, l'unicità.
Un processo magico di trasformazione
del legno in prodotto.
Del prodotto in collezioni.
Le nostre sedute si colorano
con aniline, laccature e finiture differenti
interpretando lo spazio con uno stile
ogni volta diverso e personale.

Behind us, uniqueness.
A magical transformation process
of wood into product.
Of our product into collections.
Our seating gets coloured with various
anilines, lacquers, finishes as well -
interpreting space with a style
which is ever-different and personal.



Star-system.

Montbel is Media Partner of Movie Stars Lounge at Venice's International Cinematographic Art Exhibition and Cannes Film Festival.



Come attori i nostri prodotti sono protagonisti di un palcoscenico sempre diverso, interpretando storie con ispirazioni diverse ma un linguaggio comune e distintivo.

La passerella o tappeto rosso su cui transita il nostro prodotto amplifica la percezione di un racconto esclusivo che veicola la riconoscibilità internazionale del nostro Brand. Montbel è Media Partner ai Movie Stars lounge della Mostra Internazionale d'arte cinematografica di Venezia, creando un sottile legame tra volti ricchi di personalità e design.

In their capacity as actors, our products are the protagonists of a stage that is unfailingly different, interpreting stories that are variously inspired but share a common, distinctive language. The catwalk or red carpet our product passes along amplifies perceptions of an exclusive tale, conveying our brand's international recognizability. Montbel is Media Partner at the Movie Stars' lounge of Venice's International Cinematographic Art Show, thus creating a bond between faces rich in personality and design.



finishes index

- 012 **finiture standard** . standard finishes
- 012 **finiture speciali** . special finishes
- 013 **finiture laccate** . lacquered finishes
- 014 **laminati** . laminates
- 016 **finiture metalli** . metal finishes
- 017 **scivoli** . glides

ST finiture standard . standard finishes



100 Faggio essenza / Beech timber



102 Faggio noce scuro / Beech dark walnut



103 Faggio noce / Beech walnut



104 Faggio wengè / Beech wengè



105 Faggio noce canaletto / Beech american walnut



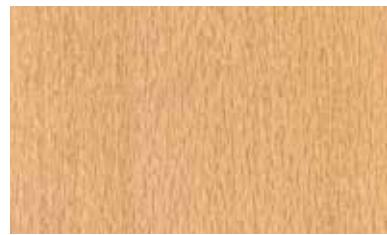
106 Faggio noce biondo / Beech light walnut



141 Faggio ciliegio scuro / Beech dark cherry



300 Faggio mogano / Beech mahogany



109 Rovere naturale / Natural Oak



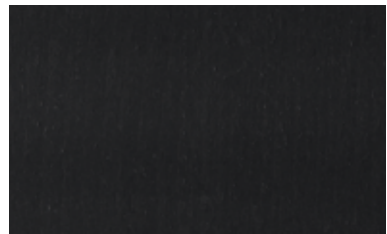
120 Bianco anilinato / White aniline



123 Anilina deserto / Desert aniline



121 Grigio anilinato / Grey aniline



125 Anilina nero scuro / Dark black aniline

LA finiture laccate . lacquered finishes



6005 Verde / Green



1036 Oro perlato / Pearl Gold



1019 Grigio beige / Grey beige



1024 Senape / Mustard



1032 Giallo / Yellow



3003 Rosso / Red



5014 Celeste / Light blue



5018 Blu turchese / Turquoise blue



6003 Verde / Green



7030 Grigio staingrau / Steingrau grey



7042 Grigio / Grey



7047 Grigio chiaro / Light grey



001 - 9003 Laccato bianco opaco / White matt lacquer



002 - 9005 laccato nero opaco / Black matt lacquer

laccato RAL a scelta
custom RAL finishes



Laccato RAL / RAL lacquered

laminati standard . standard laminates



1930 Faggio essenza /
(100) Beech timber



1661 Rovere naturale /
(109) Natural oak



1329 Faggio noce biondo /
(106) Beech light walnut



1890 Faggio noce /
(103) Beech walnut



312 Faggio noce scuro /
(102) Beech dark walnut



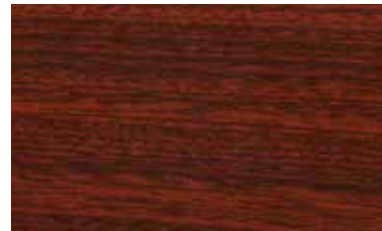
4303 Faggio noce canaletto /
(105) Beech american walnut



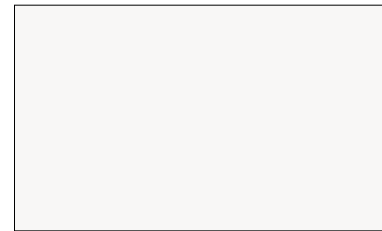
1328 Faggio ciliegio scuro /
(141) Beech dark cherry



007 Faggio wengè /
(104) Beech wengè



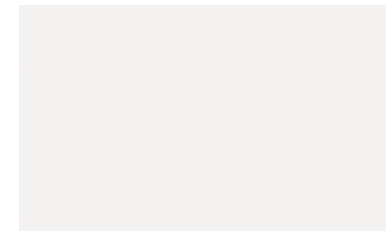
354 Faggio mogano /
(300) Beech mahogany



406 Laccato bianco opaco /
(001) White mat lacquer



421 Anilina nero scuro /
(002) Dark black aniline



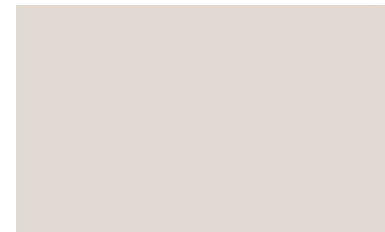
410 Anilina bianco speciale /
(130) White special aniline



1955 Bianco anilinato /
(120) White aniline



658 Grigio anilinato /
(121) Grey aniline



478 Anilina grigio ghiaccio /
(131) Light grey aniline

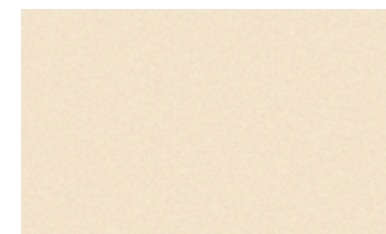


534 Anilina deserto /
(123) Desert aniline

laminati HPL . HPL laminates



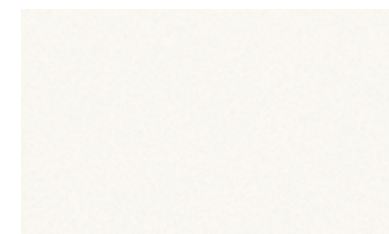
0648 Moka (bordo nero) / Moka (black edge)



0624 Beige (bordo nero) / Beige (black edge)



0625 Nero (nero compatto) / Black (total black)



0626 Bianco (bordo nero o bianco compatto) /
White (black edge or total white)

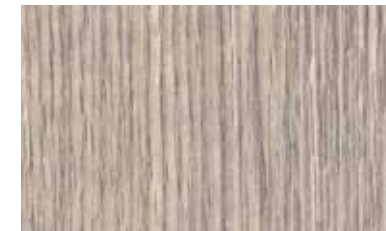


0077 Antracite (bordo nero) / Antracite (black edge)

laminati CLEAF . CLEAF laminates



LK 10 Matrix



LK 97 Matrix



LK 48 Matrix



FA 41 Penelope

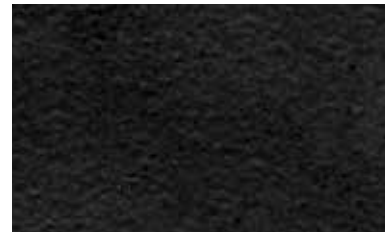


FA 44 Penelope

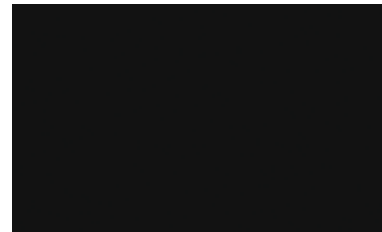


FA 48 Penelope

finiture metalli basi tavoli . metal finishes table bases



NGO Nero gofrato / *Black hammered*



NL0 Nero / *Black*



ILO Inox lucido / *Polished stainless steel*



ISO Inox satinato / *Brushed stainless steel*

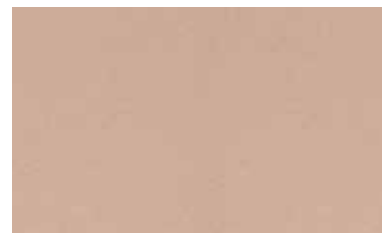


Laccato RAL / *RAL Lacquered*

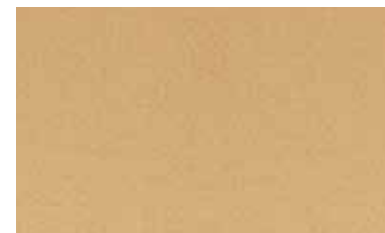
finiture metalli sedute . metal finishes seatings



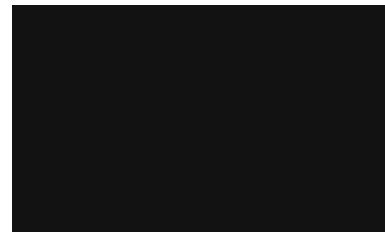
MLG RAL 1035 Beige perlato / *Pearl beige*



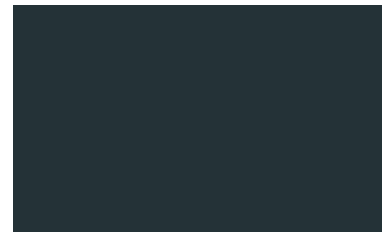
MLP Oro rosa mineralizzato / *Pink gold*



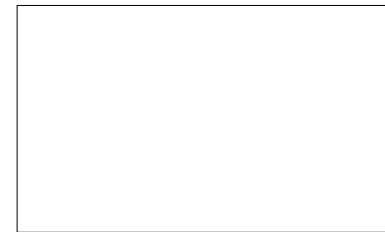
MGO RAL 1036 Oro perlato / *Pearl gold*



MBL Nero / *Black*



MGA RAL 7021 Grigio / *Grey*



MWH Bianco / *White*



Laccato RAL / *RAL Lacquered*

poggiapiedi in metallo . metal footrest



Poggiapiedi in metallo, finitura ottone satinato / *Metal footrest, brushed brass finish*



Poggiapiedi in metallo, finitura inox lucido / *Metal footrest, polished inox finish*

puntali in metallo . metal sabots

Solo Rose e Danielle / *Rose and Danielle only*



Puntale in metallo, finitura ottone satinato / *Metal sabot, brushed brass finish*



Puntale in metallo, finitura inox lucido / *Metal sabot, polished inox finish*

scivoli standard . standard glides



B Plastica (ceramica, piastrelle) / *Plastic (ceramic, tiled floor)*



C Feltro (ceramica, piastrelle, legno) / *Felt (ceramic, tiled floor, parquet)*



D Nylon marrone con gomma nera (moquette, ceramica, piastrelle, marmo, pietra) / *Brown nylon with black rubber (carpet, ceramic, tiled floor, marble, stone)*

scivolo speciale . special glide



E Teflon (ceramica, piastrelle, marmo, pietra, moquette, legno) / *Teflon (ceramic, tiled floor, marble, stone, carpet, wood)*

textiles index

020	seta . cat.A . eco-leather
022	perla . cat.B . eco-leather
024	advan . cat.B . eco-leather
028	uni . cat.B
031	danzi . cat.B
034	extrema . cat.C . eco-leather
037	super . cat.C
040	luna . cat.D
042	popi . cat.D
043	bolle . cat.D
044	polo . leather

I colori chiari non devono essere messi a contatto con tessuti e capi di abbigliamento trattati con coloranti non fissati (ad esempio jeans o derivati) o con scarse solidità di tintura, onde evitare macchie e aloni di coloranti di cui non possiamo garantire la pulitura. Vi informiamo di non poterci ritenere responsabili di danni causati dall'uso improprio dei nostri spalmati.

To avoid permanent stains, light coloured products should not be brought into contact with textiles and clothing coloured with unfixed dyes. We cannot guarantee the ability to remove unknown dyes from light coloured products. Please note that we cannot be liable for damages caused by inappropriate use of our products.

La Montbel si riserva di applicare i tessuti utilizzando il verso più consono all'articolo prescelto.

Unless specified otherwise Montbel will use its discretion to determine the direction of fabric than best suits the model selected.

SETA . Cat. A

ecopelle . eco-leather



Composizione / Composition	Peso / Weight	Solidità del colore/ Colour fastness	Abrasiono Martindale/ Abrasion Martindale
100% Poliestere/ Polyester	820 g/m ²	4	>200.000 cycles
Resistenza allo strappo/ Tear strength	Resistenza alla rottura/ Breaking strength	Resistenza al calore/ Heat resistance	Resistenza al fuoco/ Fire resistance
60 N/cm - Weft 40 N/cm - Warp	100 N/cm - Weft 90 N/cm - Warp	100C°	UNI EN 1021 parts 1-2, BS 5852 cigarettes & match, M2 France (Optional)
Antihydrolysis Jungle Test	Manutenzione/ Maintenance		
10 weeks	Non usare mai cera, smacchiatori o solventi./ Never use polish, stain removers or solvent.		

PERLA . Cat. B

ecopelle . eco-leather



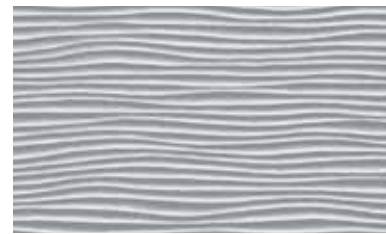
NUBE



CREMA



BIANCO



PLATA



PERLA



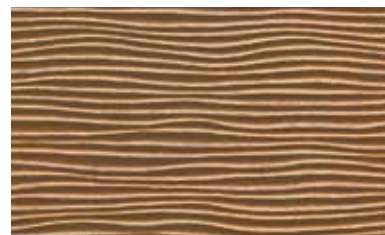
ALU



TAUPE



VISION



BRONCE



CARRO



MARRON



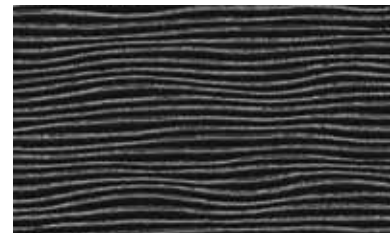
ANTHRACITE



TITAN



NEGRO



ZERO



AQUAMARINE



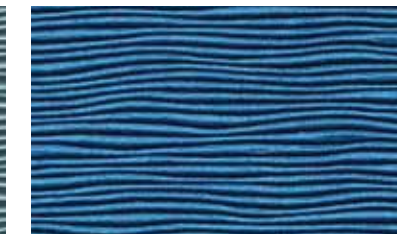
LIGHT BLUE



SKY BLUE



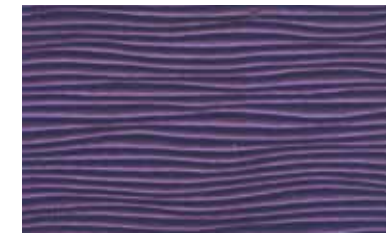
OLTRAMARE



COBALT



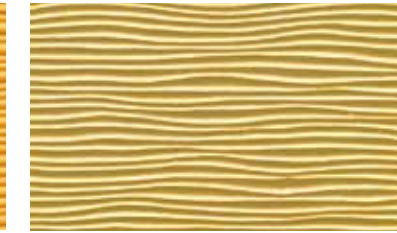
NAVY



LILA



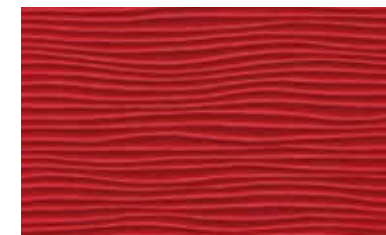
YELLOW



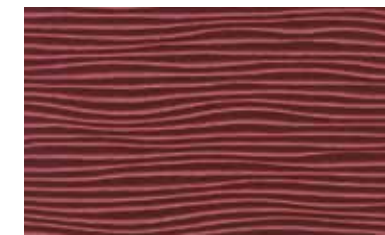
ORO



ORANGE



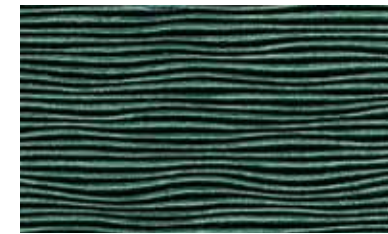
ROJO



VINO



KIWI



GREEN



SALVIA

Composizione / Composition
70% PVC - 30% PV

Peso / Weight
820 g/m

Supporto/ Back coating
100% Polyester

Resistenza al fuoco/ Fire resistance
EN 1021 Part 1&2, BS 5852 Part 1&2

Abrasione Martindale/ Abrasion Martindale 12 Kpa
200.000 cycles

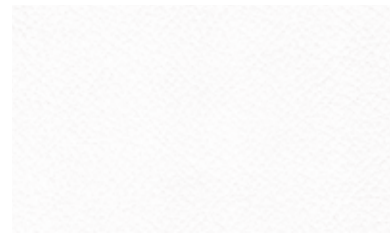
Solidità del colore alla luce/ Colour fastness to light
4

Resistente/ Resistant
10 weeks = +/- 10 years
Jungle test

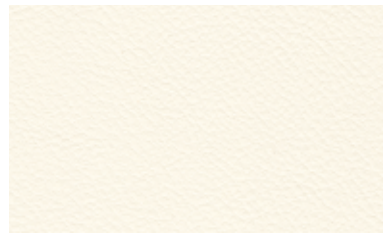
Esente da/ Free
Ftalati/ Phthalates
Meet Reach Standard - Eco & Free

ADVAN . Cat. B

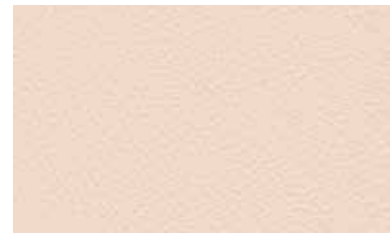
ecopelle . eco-leather



3022



0832



0623



5114



3464



5464



8014



9014



0723



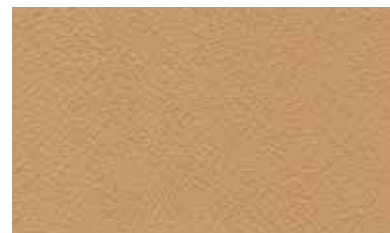
2623



8872



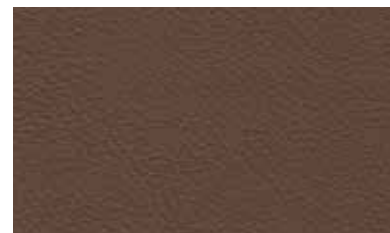
8214



7464



4623



3972



2972



3114



6872



0564



7623



1114



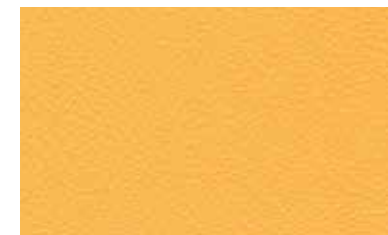
4014



2364



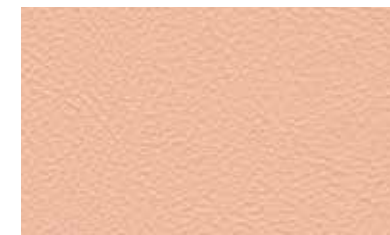
4114



8832



1464



3364



Composizione / Composition

83% PVC - 17% CO/PL

Peso / Weight

650 +/-50 g/m²
DIN EN ISO 2286-2

Resistenza al fuoco/ Fire resistance

Class 1/IM
DIN 75200, BS 5852, B1AT, 5,3-CH -
FMVSS 302, DIN EN1021 PARTE 1+2,
M2, UNI 9175 ITALIA

**Abrasione Martindale/
Abrasion Martindale 12 Kpa**

100.000 cicli/ cycles
DIN EN ISO 13934-1, BS 5690

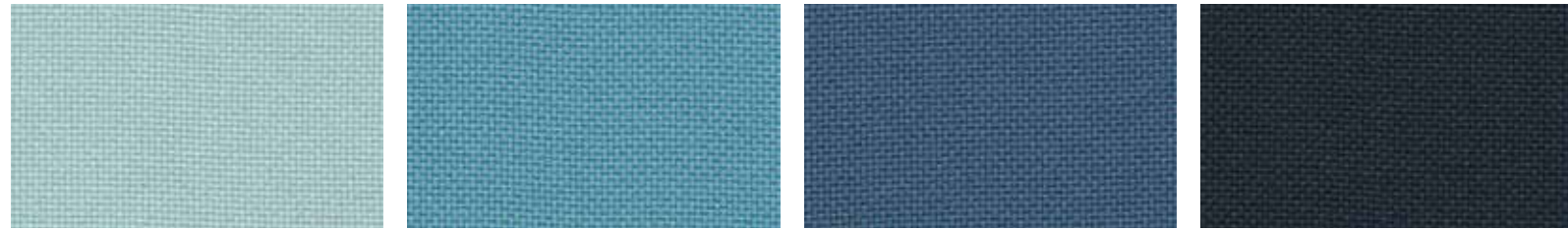
**Solidità del colore alla luce/
Colour fastness to light**

< 6 scala blu/ blue scale

**Flessibilità/ Flexibility
Temp. 20 C°**

100.000 cicli/ cycles
DIN 53351

UNI . Cat. B

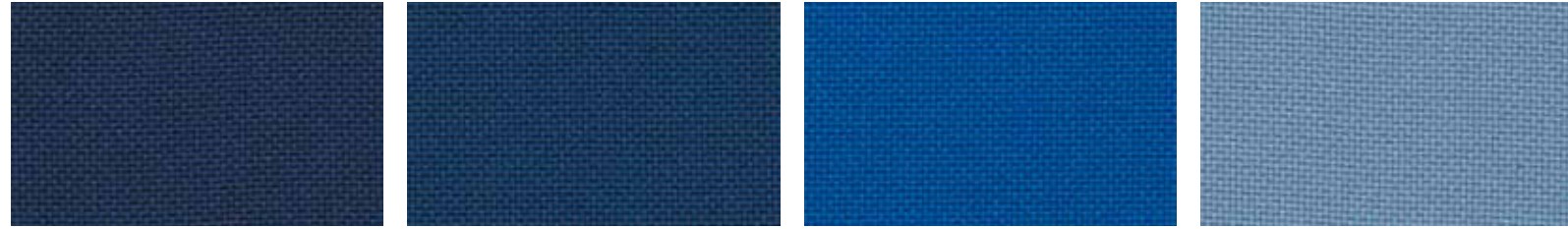


68168

67070

66139

66140

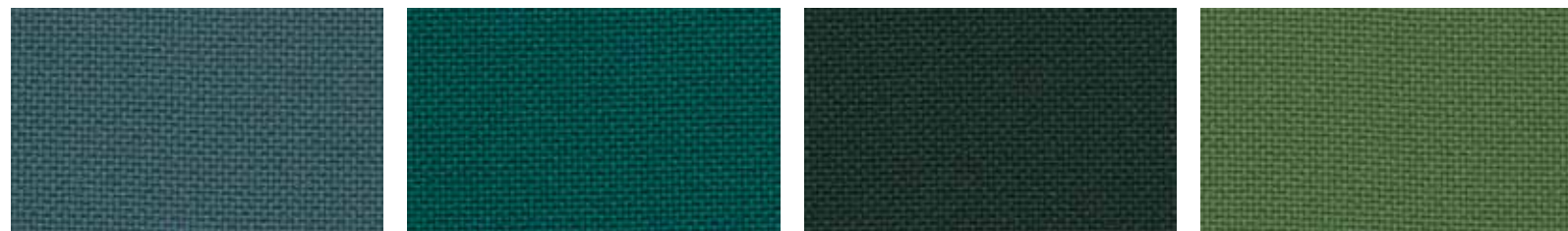


66138

66137

66136

66135

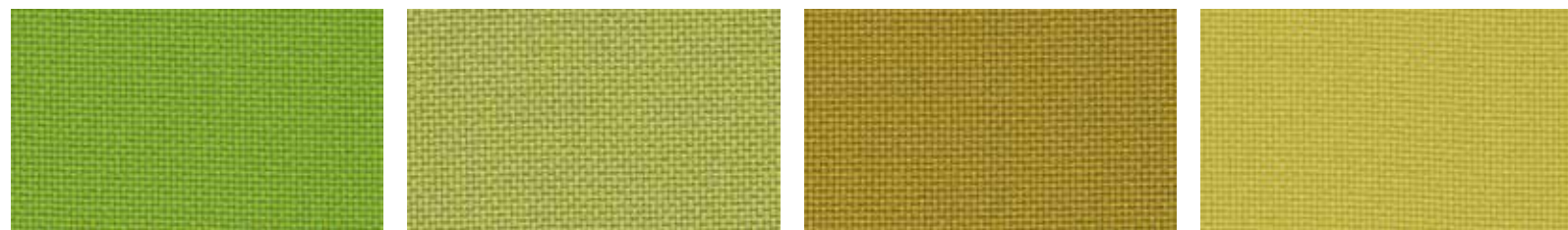


67071

68152

68149

68169

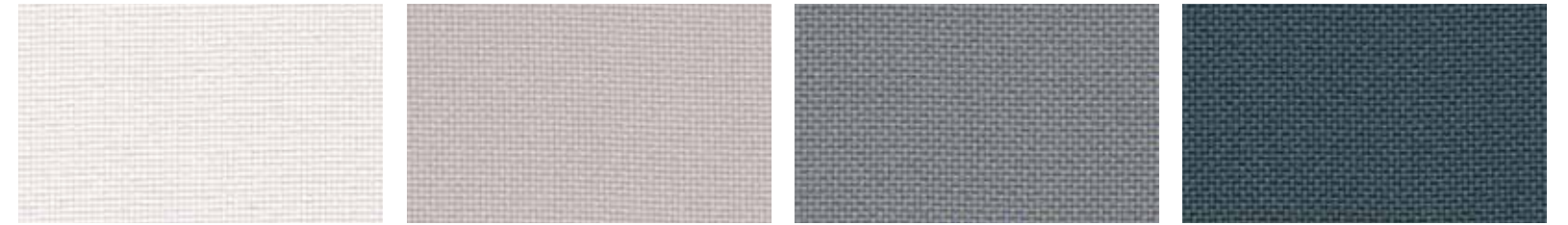


68154

68153

62071

68170

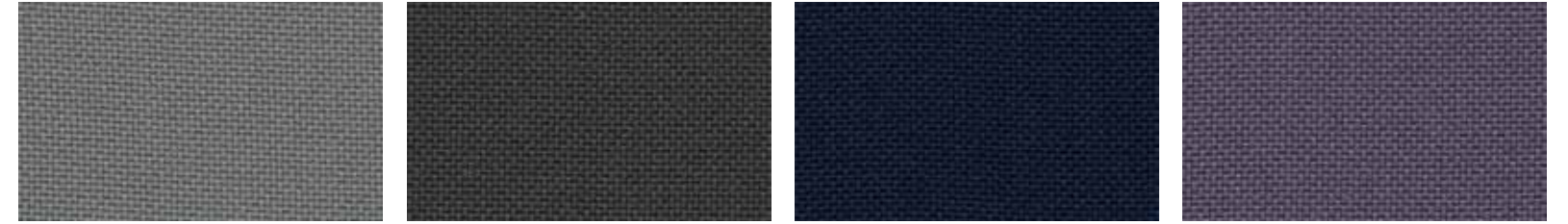


60079

60093

60080

60081

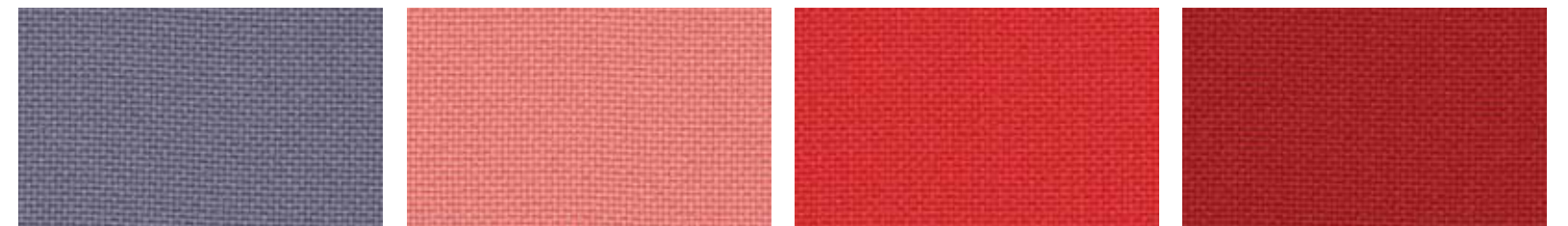


60083

60084

66134

65086

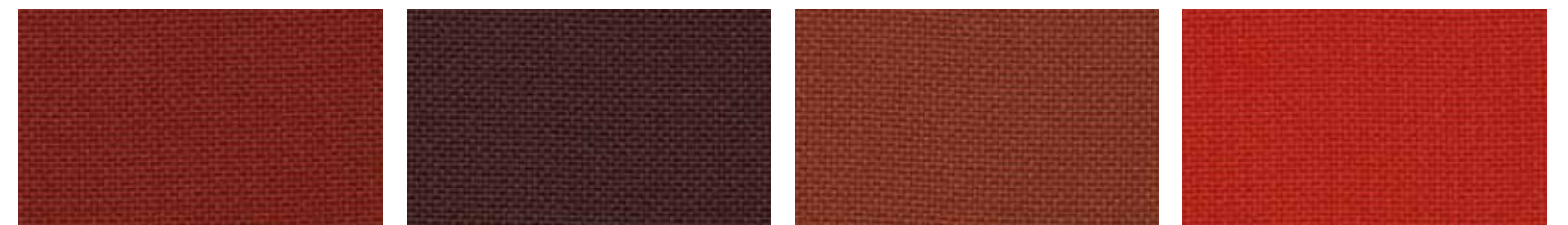


65085

64183

64174

64175



64172

61145

61144

64171



DANZI . Cat. B



Composizione / Composition	Peso / Weight	Pilling	Resistenza all'abrasione (Martindale)/ Abrasion reistance (Martindale)
100% Trevira CS	435 g/m (14.03 oz/lin. yd.)	5 Scale 1-5, max. 5 - EN ISO 12945-2	100.000 rubs
Resistenza del colore alla luce/ Colour fastness to light	Solidità del colore allo sfregamento/ Colour fastness to rubbing	Infiammabilità/ Flammability	US ACT
5-8 Scale 1-8, mx. 8 - EN ISO 105-B02	4-5 umido-secco/wet-dry Scale 1-5, max. 5 - EN ISO 105-X12	EN 1021 1&2, BS 5852 0&1, BS5852 Crib 5, DIN 4102.B1, FAR/JAR 25 853, önorm B3825 B1-Q1, NFP92-503/4/5, M1, Class Uno UNI 9175 Class 1, EMME/BS 7116 Med. Hazard, AM 18 NF D80-013, CA TB 117-2013	AATCC 16 Lightfastness pass, AATCC 8 or 116 wet/dry crocking, California Bulletin CAL117-E Class 1 ASTM D4157-07 Wyz Abrasion (HDU) ASTM D3511 Pilling, CA TB 117-2013



Composizione / Composition
70%WO - 20% PL - 5% PA - 5% AF

Peso / Weight
490 g/m

Martindale
> 40.000
(UNI EN ISO 12947 12 kpa)

Pilling
500 cycles, 4/5 - 1000 cycles 4, 2000
cycles, 3-4 - 5000 cycles, 3-4 (12945-2)

**Solidità del colore alla luce /
Colour fastness to light**
4-5
UNI ISO 105 B02

**Solidità del colore allo sfregamento /
Colour fastness to crocking**
4-5 Dry / A secco
4 Wet / Ad umido

**Resistenza al fuoco /
Fire resistance**
Cigarettes Test (EN 1021/1)
Match Test (EN 1021/2)

**Manutenzione /
Maintenance**
☒ ☒ ☒ ☒ ☒

EXTREMA . Cat. C ecopelle . eco-leather

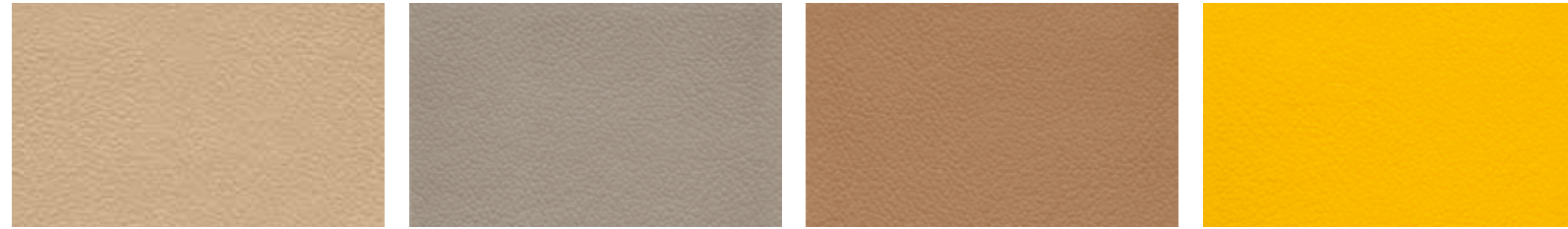


150

3750

250

550



350

450

1150

2350



650

2950

750

3250



850

3150

4050

3550



4350

2750

2850

950



4850

1050

1250

1350



1650

2450

1450

1550



3950

4650

4550

4150



SUPER . Cat. C



Composizione / Composition

63% PU - 37% CO

Peso / Weight

480 g/m²

**Resistenza all'abrasione/
Abrasion resistance**

150.000 rubs
EN ISO 12947-2/2000

**Solidità del colore alla luce/
Colour fastness to light**

5-6 - Scale 1-8 max. 8
EN ISO 105-B02

Solidità al sudore/ Solidity to sweat

Acid/alkaline 4-5 - Grey scales
UNI EN ISO 105 E04/98

Tropical test

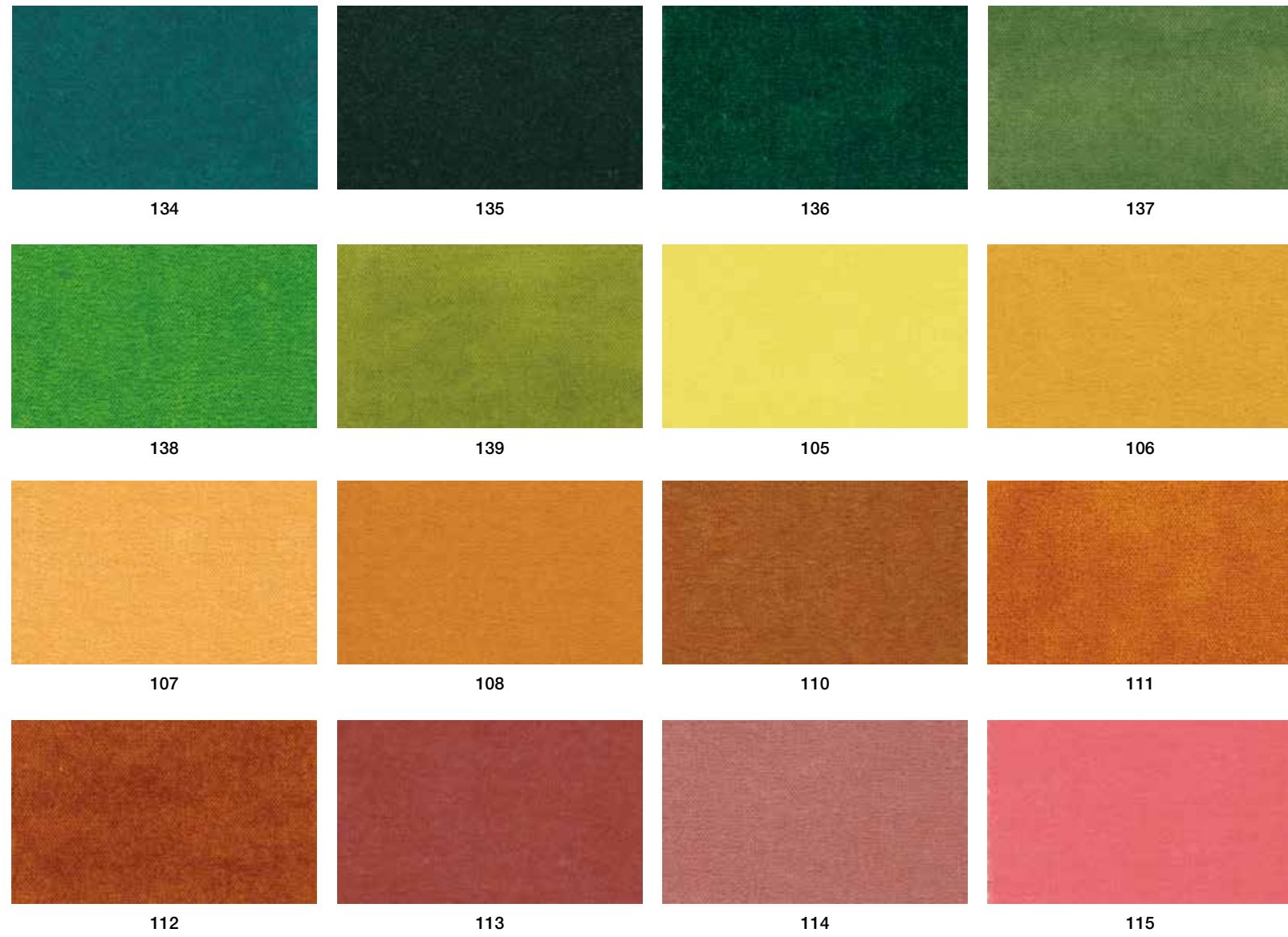
70 C° - Days 60 Unchanged

Resistenza al fuoco/ Fire resistance

IMO Resolution A.652(16)/89, EN 1021-2/93, BS 5852-1/79, BS5859/90 S.4 crib 5, UNI 9175/87e 9175 FA-1/94 Classe 1IM (uno I emme)

Trattamento/ Treatment

Ultra-fresh, antibatterico, antiacaro.
Determina freschezza igienica duratura./
Ultra-fresh, antimicrobial, antiacarus.
It determines durable hygenic freshness.



Composizione / Composition

100% PES FR

Peso / Weight

400 g/m²

Pilling

5
UNI EN ISO 12945-2

**Resistenza all'abrasione/
Abrasion resistance**

60.000 cycles
UNI EN ISO 12947-2

**Solidità del colore allo sfregamento a secco/
Colour fastness to dry rubbing**

4
UNI EN ISO 105-X12

**Solidità del colore allo sfregamento ad umido/
Colour fastness to wet rubbing**

4
UNI EN ISO 105-X12

**Solidità del colore alla luce/
Colour fastness to light (Xenotest)**

>5 blue scale
UNI EN ISO 105-B02

Resistenza la fuoco/ Fire resistance

EN 1021-1, EN 1021-2, UNI 9175 - 1IM,
UNI 9177 - Class1, BS 5852 - CRIB 5,
NF 92.503-M1, DIN 4102 -B1

LUNA . Cat. D



Composizione / Composition

100% Trevira CS

Peso per metro lineare/
Weight per line meter

605 g/m

Abrasiono martindale/
Martindale abrasion

100.000 rubs
EN ISO 12947-2

Solidità del colore alla luce artificiale/
Colour fastness to artificial light

4/5 - 5 ISO 105-B02

Resistenza del colore allo sfregamento a
secco / Colour resistance to rubbing (dry)

5
UNI EN ISO 105-X12

Resistenza del colore allo sfregamento ad
umido / Colour resistance to rubbing (wet)

4/5 - 5
UNI EN ISO 105-X12

Resistenza la fuoco/ Fire resistance

Class 1 IM, M, B1 DIN 4102, EN 1021,
BS5852 crib5, NFTA 701, EN 13733, IMO
7-8, California TB 117

POPI . Cat. D



102



114



106



103



107



110



115



109



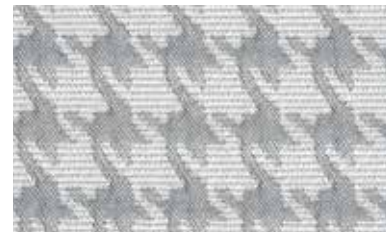
111



108



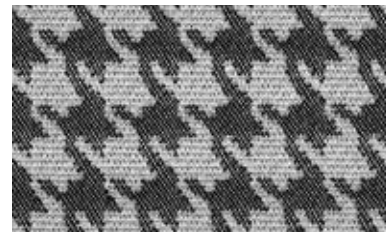
116



101



113



112

Composizione / Composition

100% PES

Peso / Weight

420 g/m²

Pilling

4
UNI EN ISO 12945-2

**Resistenza all'abrasione /
Abrasion resistance**

35.000 cycles
UNI EN ISO 12947-2

**Solidità del colore alla luce artificiale /
Colour fastness to artificial light**

5/6 blue scale
UNI EN ISO 105-B02

**Solidità del colore allo sfregamento a
secco / Colour fastness to rubbing (dry)**

4/5 grey scale
UNI EN ISO 105-X12

**Solidità del colore allo sfregamento ad
umido / Colour fastness to rubbing (wet)**

4/5 grey scale
UNI EN ISO 105-X12

**Resistenza al fuoco /
Fire resistance**

BS5852:2006 (p.11 CRIB 5), EN 1021-1,
EN 1021-2, UNI 9175:2010 Classe 1 IM

BOLLE . Cat. D



2



14



6



3



7



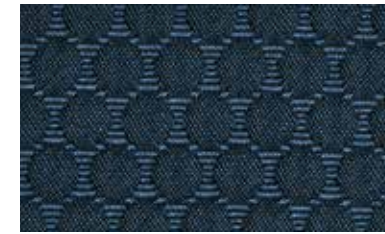
10



15



9



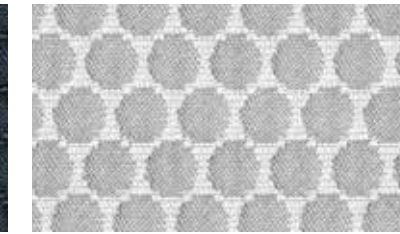
11



8



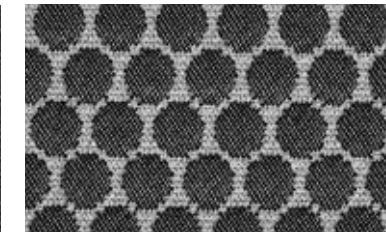
16



1



13



12

Composizione / Composition

100% PES

Peso / Weight

420 g/m²

Pilling

4
UNI EN ISO 12945-2

**Resistenza all'abrasione /
Abrasion resistance**

35.000 cycles
UNI EN ISO 12947-2

**Solidità del colore alla luce artificiale /
Colour fastness to artificial light**

5/6 blue scale
UNI EN ISO 105-B02

**Solidità del colore allo sfregamento a
secco / Colour fastness to rubbing (dry)**

4/5 grey scale
UNI EN ISO 105-X12

**Solidità del colore allo sfregamento ad
umido / Colour fastness to rubbing (wet)**

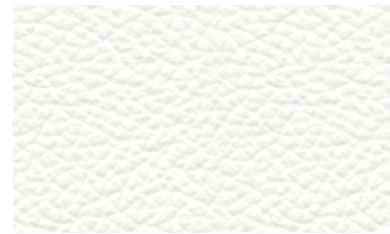
4/5 grey scale
UNI EN ISO 105-X12

**Resistenza al fuoco /
Fire resistance**

BS5852:2006 (p.11 CRIB 5), EN 1021-1,
EN 1021-2, UNI 9175:2010 Classe 1 IM

POLO

pelle . leather



810



872



811



815



813



812



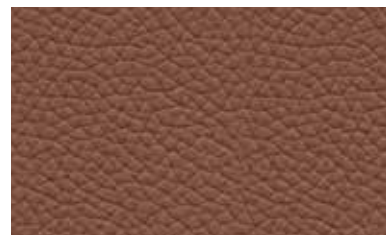
826



931



823



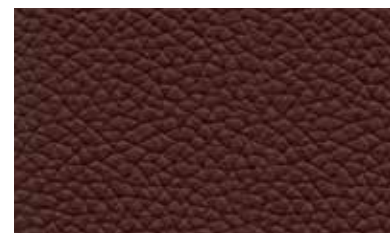
821



822



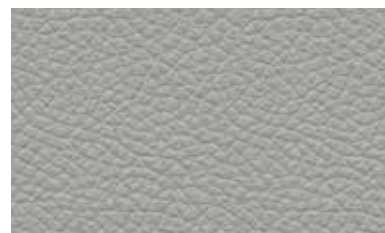
824



845



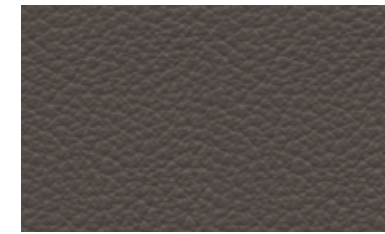
827



854



858



859



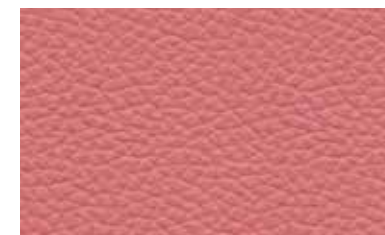
825



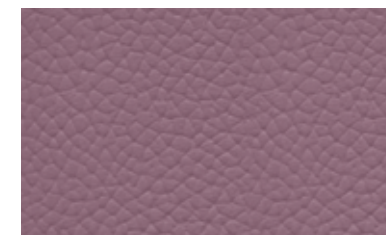
860



847



848



880



849



844



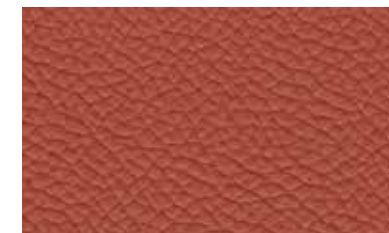
850



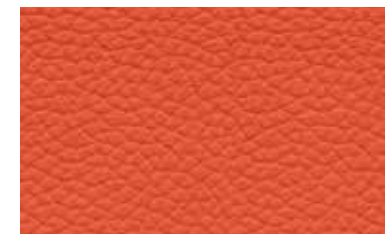
843



842



840



839



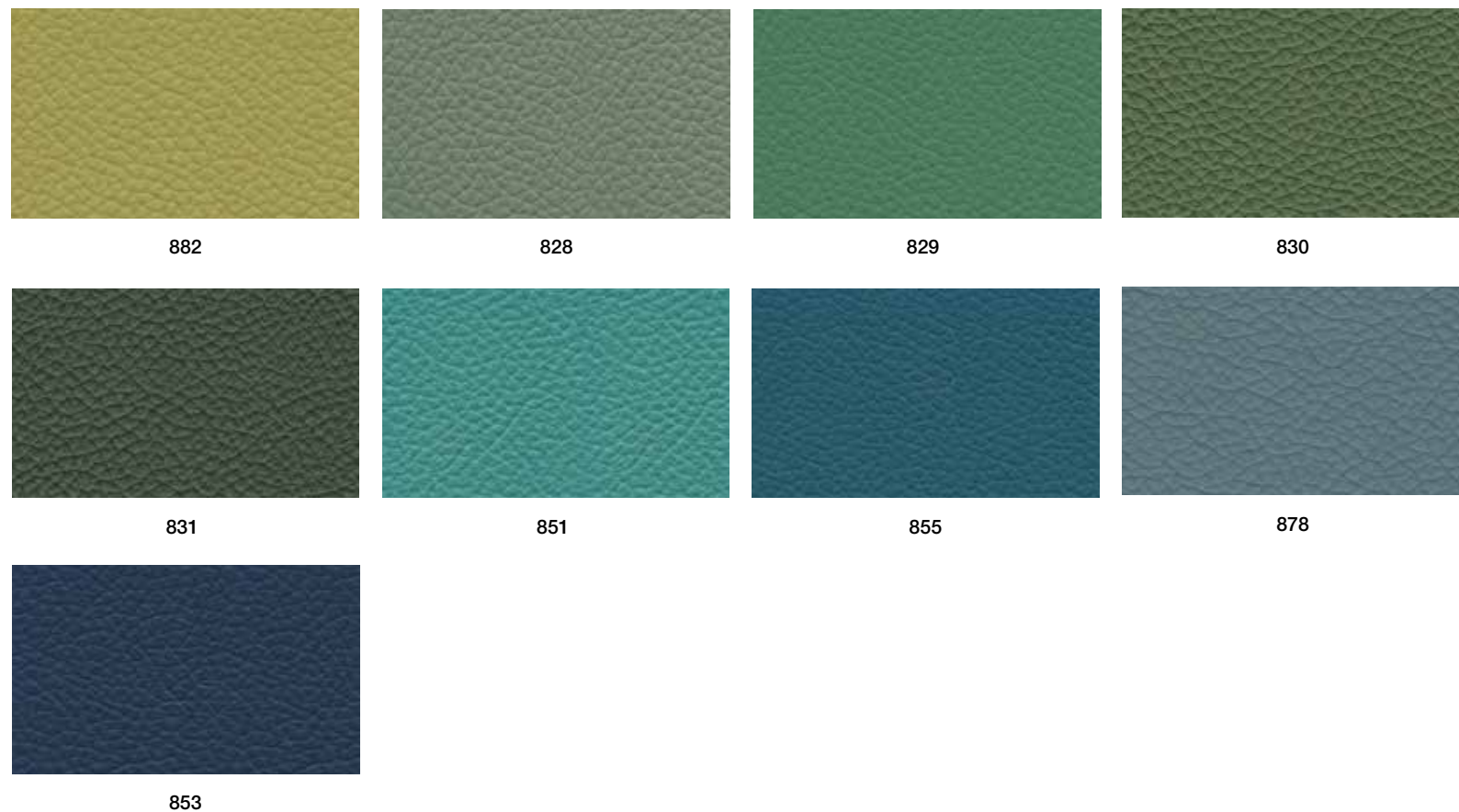
838



837



881



credits

AD . Daniele Lo Scalzo Moscheri

Photo . emozioni.com

Fotolito . lucegroup.it

Stampa . sincromia.it cod.190373

Aggiornamento aprile 2021

international press office

Claim_Brand Industry

T. +39 0422 633865

sara.saltarelli@claim.it

Montbel Srl

Sales office

Via Braiduzza, 8

I-33048 San Giovanni al Natisone - Udine - Italy

T. +39 0432 743147 / 743233

F. +39 0432 743807

Head office

Via D. Scuole, 30

I-33044 Manzano - Udine - Italy

T. +39 0432 750784

F. +39 0432 740279

www.montbel.it - montbel@montbel.it

Origine / Origin	Peso / Weight	Spessore/ Thickness	Solidità del colore alla luce/ Colour fastness to light
Raw Hides (UE)	700 g/m ²	0.9 - 0.11 mm	Value 7 blue scale
Solidità dello sfregamento ad umido/ Wet rub fastness	Solidità dello sfregamento a secco/ Dry rub fastness	Resistenza alla flessione ripetuta/ Flex crack resistance	Resistenza la fuoco/ Fire resistance
150 cycles value 4 grey scale ISO 11640	500 cycles value 5 grey scale ISO 11640	20.000 cycles ISO 5402	British standard BS5852 Part 1 NI/O: Cigarette test n°1 Match test; Imo FTP: Part 8 - Resolution A.652 (16), NI/O: Cigarette test NI/1: Match test

I colori chiari non devono essere messi a contatto con tessuti e capi di abbigliamento trattati con coloranti non fissati (ad esempio jeans o derivati) o con scarse solidità di tintura, onde evitare macchie e aloni di coloranti di cui non possiamo garantire la pulitura. Vi informiamo di non poterci ritenere responsabili di danni causati dall'uso improprio dei nostri spalmati.

To avoid permanent stains, light coloured products should not be brought into contact with textiles and clothing coloured with unfixed dyes. We cannot guarantee the ability to remove unknown dyes from light coloured products. Please note that we cannot be liable for damages caused by inappropriate use of our products.

La Montbel si riserva di applicare i tessuti utilizzando il verso più consono all'articolo prescelto.

Unless specified otherwise Montbel will use its discretion to determine the direction of fabric than best suits the model selected.

